



# The WHOLE Solution

## InnoGain SPB

### Description:

The InnoGain SPB for horizontal use realizes profiled recesses in (wall) elements and columns. The InnoGain SPB can be attached perpendicular to the formwork within one minute without further support.

Compared to the traditional system, InnoGain saves a lot of labor. With the InnoGain SPB there is no need of shorten the steel pipes, tape it or keeping it on place with iron wires.

Also Injuries such as cuts or abrasions during the processing of traditional steel recess pipes are excluded.

By using the InnoGain SPB raw materials are limited and CO2 emissions are kept to a minimum.

By not using traditional steel tubes, raw materials are limited and CO2 emissions are kept to a minimum.

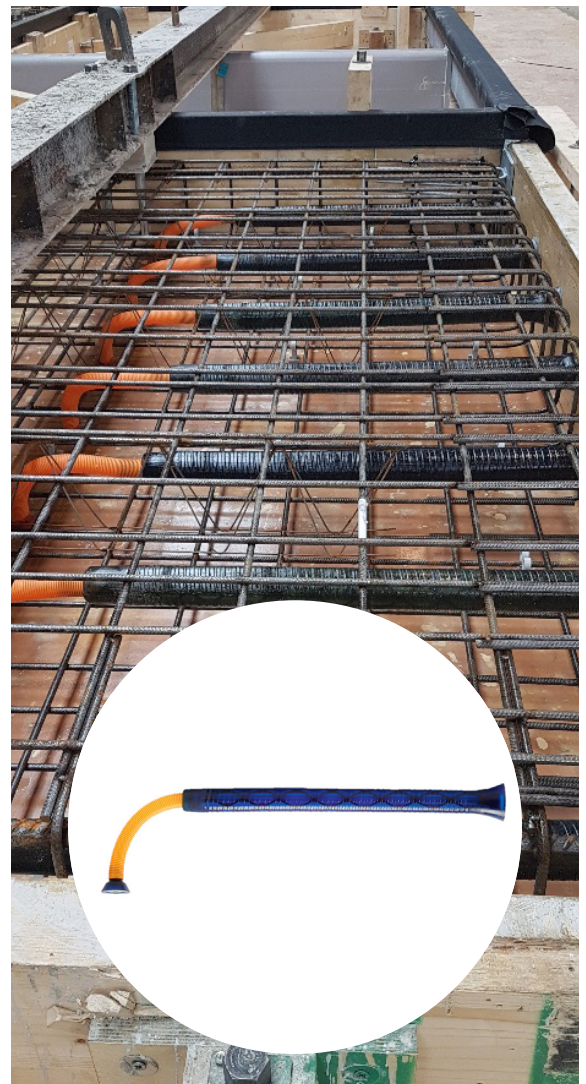
After manual removal of the InnoGain SPB, a clean, dry and profiled recess remains in which the grout adheres excellently. No rust formation during outdoor storage or on visible parts. It is not possible to roll up the steel tube during installation on the construction.

### System:

The InnoGain GM is based on a unique interplay between a rigid inner core and the flexible profiled outer cover.

The flexible outer cover of the GM Gainmaker will undergo a diameter reduction during manual removal. After removal, the flexible outer part returns to its original shape.

The special composition of the rubber of the InnoGain GM prevents the adhesion of concrete residues. This allows them to be used again immediately.



### Benefits:

- Significant material and labor saving.
- Eliminates corrosion problems.
- Reusable with minimal maintenance.
- CO2 emissions are kept to a minimum
- Mounted within 1 minute.
- No specialist tools required.
- Saving logistics and transport costs.
- Easy in use.
- 100% recyclable



Ballykillduff, Tobinstown, Tullow, Co. Carlow.

[www.InnoGain.com](http://www.InnoGain.com)



## Specification:

### InnoGain SPB

Article	Description	Size (mm)	Weight (KG)
I164040	SPB	Ø43x400	0.86
I164050	SPB	Ø43x500	1.03
I164060	SPB	Ø43x600	1.20
I164070	SPB	Ø43x700	1.37
I164080	SPB	Ø43x800	1.54
I164100	SPB	Ø43x1000	1.88
I165030	SPB	Ø53x300	1.00
I165040	SPB	Ø53x400	1.30
I165050	SPB	Ø53x500	1.60
I165060	SPB	Ø53x600	1.90
I165070	SPB	Ø53x700	2.20
I165080	SPB	Ø53x800	2.50
I165090	SPB	Ø53x900	2.80
I165100	SPB	Ø53x1000	3.10
I166050	SPB	Ø63x500	2.30
I166060	SPB	Ø63x600	2.60
I166070	SPB	Ø63x700	3.00
I166080	SPB	Ø63x800	3.40
I166090	SPB	Ø63x900	3.80

## Asseccories

### InnoGain SPB-SPV (Screwplug adjustable)

Article	Description	Size (mm)	Weight (KG)
I192001	SPB-SPV	Ø29	0.15
I192002	SPB-SPV	Ø37	0.17

### InnoGain SPB-MP (Magnetplug)

Article	Description	Size (mm)	Weight (KG)
I193001	SPB-MP	Ø29	0.17
I193002	SPB-MP	Ø37	0.20

### InnoGain Wingbolt / Pull out key

Article	Description	Size (mm)	Weight (KG)
I190001	VB-Wingbolt	KO10x200	0.20
I191001	US-Pull out key	KO10	0.20

### InnoGain Grout tube

Article	Description	Size (mm)	Weight (KG)
I194001	Grout tube orange	Ø29	2.50
I194002	Grout tube orange	Ø37	3.60

### InnoWax

Article	Description	Size	Weight (KG)
I098025	InnoWax	1 ltr	0.90
I098030	InnoWax	5 ltr	4.50



Ballykillduff, Tobinstown, Tullow, Co. Carlow.

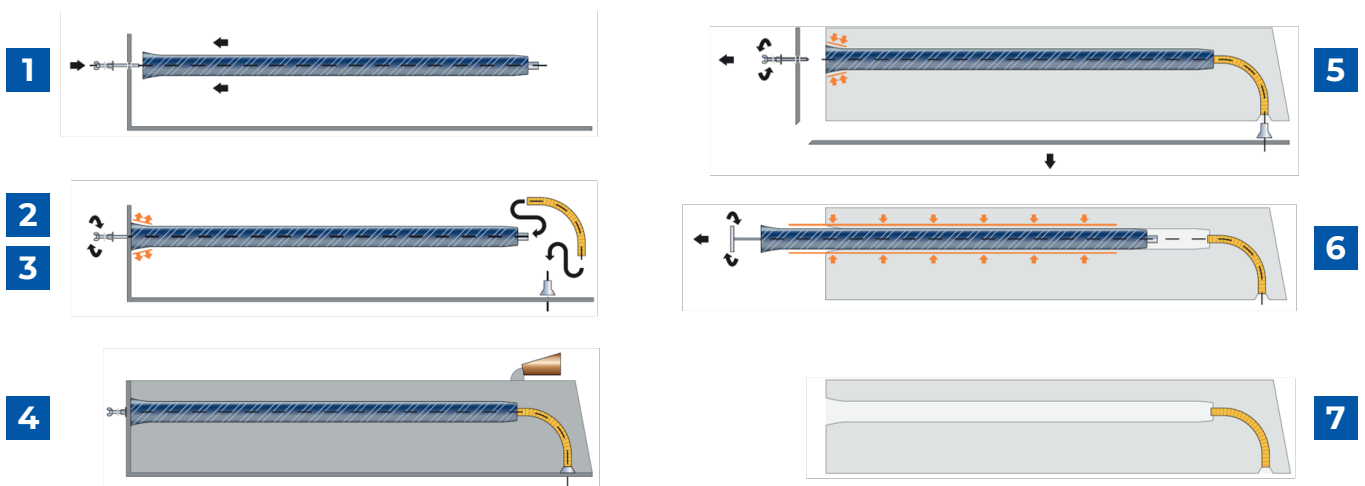
[www.InnoGain.com](http://www.InnoGain.com)



# InnoGain SPB

## Installation guide:

- 1** The InnoGain SPB is attached firmly with its fixing bolt through the formwork. Turn the wing-bolt by hand in to the steel inner core of the InnoGain SPB.
- 2** The wing-bolt should be hand tightened with a spanner until a positive connection is made with the inset metal plate. Holding the wing-bolt firmly to prevent the steel inner core turning in the flexible outer part, turn the nut with a tool so that the inside steel core is firmly fixed to the formwork.  
During securing the tapered end section closes tightly against the formwork and prevents any ingress of concrete which is important to aid the removal of InnoGain.  
Check by hand the InnoGain SPB is securely fixed on the formwork - no further support is required.
- 3** The plastic grout tube should be cut to the required length and inserted into the end of the InnoGain SPB and over the magnet or screw plug.
- 4** Casting the concrete.
- 5** Remove the formwork, if correctly installed, tension within the InnoGain will ensure that the head protrudes from the concrete.
- 6** The special release key should be screwed into the InnoGain SPB. The key has two flat spots that prevent a vacuum forming which allows for easy removal. With the release key attached firmly pull the SPB straight from the concrete. If the release key has not been correctly engaged the InnoGain will release heavier.
- 7** The result is a clean, dust free, profiled InnoGain hole.



## Instruction movie:

<https://innogain.nl/producten/spb/>

IMPORTANT: Directions for use are given for guidance only and are not intended to form part of any contract. They should be varied or adapted to suit your particular materials or conditions of use. Goods supplied by the company are made to approved standards from the highest quality raw materials but no warranty or guarantee is given as to their suitability for any particular purpose or application, and no liability is accepted for any loss or damage arising directly or indirectly from the use of the Company's products irrespective of any information given to us as to intended use of such products. It is therefore recommended that prospective users should test a sample of this product under their own conditions to satisfy themselves that the product is suitable for the purpose intended.



Ballykillduff, Tobinstown, Tullow, Co. Carlow.

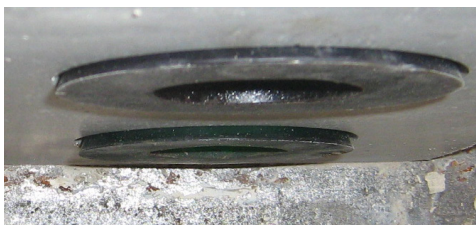
[www.InnoGain.com](http://www.InnoGain.com)



# InnoGain SPB

## Important remarks:

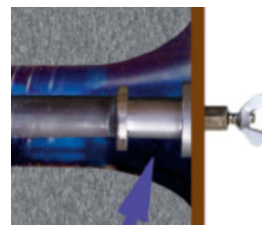
- a. If the concrete temperature is high during removal of InnoGain products this can result in the head being left in the concrete after removal of the formwork. To prevent this from happening the head may be greased during the assembly in the formwork with InnoWax.
- b. Care should be taken to avoid sharp edges which may damage the flexible outer cover.
- c. InnoGain should only be used in concrete.
- d. Always ensure the InnoGain is pulled squarely from the concrete.
- e. After protracted use the InnoGain can get dry noticed by increasing pull resistance - an application of InnoWax can be used to restore the InnoGain.
- f. Use InnoGain SPB in the formwork only in a horizontal position.



Unstressed head after formwork



Good fixed on the formwork



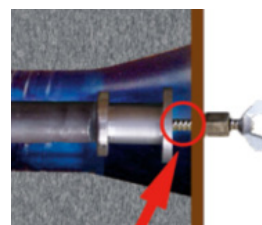
Good fixed on the formwork



Avoid sharp edges



Wrong fixed on the formwork



Wrong fixed on the formwork

IMPORTANT: Directions for use are given for guidance only and are not intended to form part of any contract. They should be varied or adapted to suit your particular materials or conditions of use. Goods supplied by the company are made to approved standards from the highest quality raw materials but no warranty or guarantee is given as to their suitability for any particular purpose or application, and no liability is accepted for any loss or damage arising directly or indirectly from the use of the Company's products irrespective of any information given to us as to intended use of such products. It is therefore recommended that prospective users should test a sample of this product under their own conditions to satisfy themselves that the product is suitable for the purpose intended.



Ballykillduff, Tobinstown, Tullow, Co. Carlow.

[www.InnoGain.com](http://www.InnoGain.com)