



The
WHOLE
Solution

Galvanised Corrugated tube & Accessories

Galvanised Corrugated tube



InnoGain Modular system



Innogain Steel Tube Plug



Grout plugs & Flexibel grout tube



Filling, -End caps



Wingbolt & Pull out key



NEWEST INNOVATION

BH-Tubeholder



Benefits:

- Labor saving due to fast assembly.
- Guaranteed straight and solid fastening.
- Easy in use.
- Reusable with minimal maintenance.
- Good seal against concrete water.
- No need of tape or iron wires.
- 100% recyclable.

ARC CONSTRUCTION
SOLUTIONS
IRELAND

Ballykillduff, Tobinstown, Tullow, Co. Carlow.

www.InnoGain.com



The WHOLE Solution

BH-Tubeholder

Description:

The BH-Tubeholder has been specially developed to fasten Corrugated steel tubes quickly, easily and straight to the formwork, without further support such as tape, iron wires or other types of binders, which is a time-consuming activity. With the BH-Tubeholder, the steel tube can be fixed stiffly and right angles within one minute. Perfect for columns or concrete parts where little or much reinforcement is present.

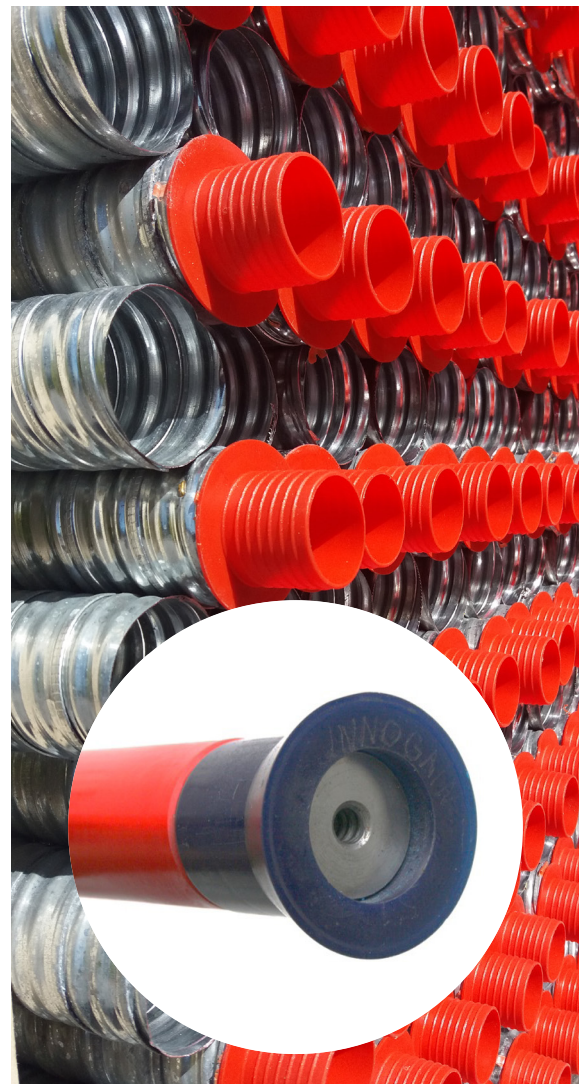
Non-perpendicularly cast Corrugated steel tubes can cause considerable problems during assembly at the construction site, but with the use of the BH-Tubeholder this belongs to the past.

The system:

The BH-Tubeholder consists of three parts. The blue conical front part made of the wear-resistant InnoGain HD material with the internally movable steel core, the red flexible intermediate part and the blue adjustable end plug. With this end plug the BH-Tubeholder can be adjusted to the desired clamping or for possible tube tolerances. The steel core can move internally in the front part and is pulled against the formwork with a KO10 wingbolt, so that the red part increases in diameter and the steel corrugated tube is clamped firmly. When the wing bolt is loosened, the red flexible intermediate piece will relax again and can therefore be easily removed from the cast steel corrugated tube.

Specification:

ARTICLE	DESCRIPTION	SIZE (MM)	FLANGE SIZE(MM)	WEIGHT (KG)
R804236	BH-42	360	Ø59 H20	0.90
R805143	BH-51	430	Ø70 H20	1.60
R806348	BH-63	480	Ø80 H20	2.20
R807060	BH-70	600	Ø88 H20	2.60
R808165	BH-80	650	Ø95 H20	3.00



NEWEST INNOVATION



Benefits:

- Labor saving due to fast assembly.
- Guaranteed straight and solid fastening.
- Easy in use.
- Reusable with minimal maintenance.
- Good seal against concrete water.
- No need of tape or iron wires.
- 100% recyclable.



Ballykillduff, Tobinstown, Tullow, Co. Carlow.

www.InnoGain.com



BH Tubeholder

Installation Guide:

By turning the front part and the back part in and out against each other, the BH-Tubeholder can be adjusted for possible Corrugated steel tube tolerances.

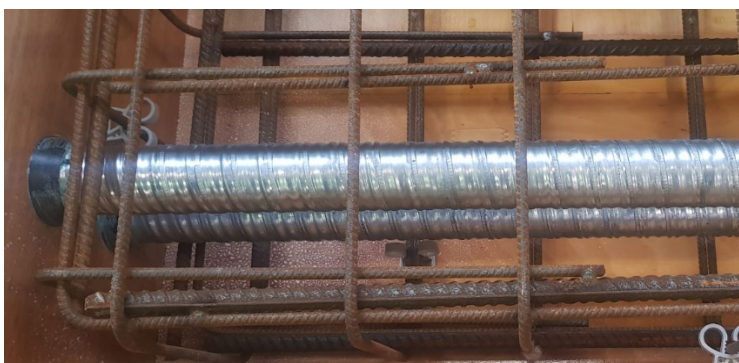


Place the Corrugated steel tube over the BH-Tubeholder and tighten the steel core of the BH-Tubeholder against the formwork surface with the key while holding the wingbolt.



The BH-Tubeholder is well set for the Corrugated steel tube if it can be slide easily and without resistance into the steel corrugated tube. After tightening the BH-Tubeholder with the corrugated steel tube to the formwork. The correct setting can be checked because the steel pipe can no longer move or rotate manually.

After casting and removing the wingbolt the BH-Tubeholder can be removed straight with the pull out key easily and without resistance out of the casted Corrugated steel tube.



Instruction Movie:

<https://innogain.nl/producten/verzinkte-stalen-sparingsbuis/bh/>



Ballykillduff, Tobinstown, Tullow, Co. Carlow.

www.InnoGain.com



The WHOLE Solution

Galvanised Corrugated Tube

Description:

The Corrugated steel tubes are galvanized internally and externally, which provides better protection against rust. No more rust spots on columns, walls and other visible concrete elements.

The Galvanised Corrugated steel tubes can be supplied to the exact size and can also be provided with a filling cap that is suitable for the flexible corrugated orange filling tube \varnothing 29 and \varnothing 37 mm. The filler cap is firmly fixed on the steel spiral tube

Labor costs, high transport costs and a lot of residual waste are saved by getting the steel tube delivered on the correct size.

The system:

Due to our special way of cutting, we avoid very sharp edges, which means that there is less chance of injuries from the sharp burrs and also less wear on the steel tube plugs.

Cutting "last minute" in the concrete factory with a metal saw is a time-consuming activity. Cutting the steel tubes to size with grinding discs is not harmless and does not fit into the aim of dust reduction. The grinding discs leave a very unhealthy substance in the industrial space.

Specification:

ARTICLE	DESCRIPTION	TYPE (MM)	LENGETE (MM)	DIKTE (MM)	WEIGHT (KG)
0423000	Galvanised Corrugated tube	\varnothing 42	3000	0.26/0.30	1.47
0513000	Galvanised Corrugated tube	\varnothing 51	3000	0.26/0.30	1.68
0633000	Galvanised Corrugated tube	\varnothing 63	3000	0.26/0.30	2,16
0703000	Galvanised Corrugated tube	\varnothing 70	3000	0.26/0.30	2.34
0803000	Galvanised Corrugated tube	\varnothing 80	3000	0.26/0.30	2.70

Different lengths on request.



Benefits:

- Protects against corrosion.
- Time savings through customized delivery.
- No injuries such as cuts or abrasions.

ARC CONSTRUCTION
SOLUTIONS
IRELAND

Ballykillduff, Tobinstown, Tullow, Co. Carlow.

www.InnoGain.com



The
WHOLE
Solution

Steel Tube Plug

Description:

The Steel Tube plug is an one-piece plug that can be easily mounted on the formwork. Steel or plastic tubes/pipes can therefore be positioned. The Steel Tube Plug is available with a KO10 threaded attachment or a magnetic including a KO10 version. High wear and dimensional stability due to the InnoGain HD material and resistant to all types of formwork oils.

With the M10 adjustment bolt at the rear, the steel tube plug can be adjusted for better clamping or to adjust when there is a tolerance



Specification:

SBP-KO10 Steel Tube Plug screw

Article no.	Description	Size (MM)	Flange size (MM)	Weight (KG)
I644264	SBP-KO10 Ø42	Ø42/Ø41 H64	Ø60/Ø48 H20	0.21
I645164	SBP-KO10 Ø51	Ø51/Ø50 H64	Ø68/Ø55 H20	0.29
I646364	SBP-KO10 Ø63	Ø63/Ø62 H64	Ø80/Ø67 H20	0.37
I647064	SBP-KO10 Ø70	Ø70/Ø69 H64	Ø88/Ø74 H20	0.42
I648064	SBP-KO10 Ø80	Ø80/Ø79 H64	Ø98/Ø85 H20	0.62



SBP-M Steel Tube Plug magnet

Article no.	Description	Size (MM)	Flange size (MM)	Weight (KG)
I545164	SBP-M Ø51	Ø51/Ø50 H64	Ø68/Ø55 H20	0.37
I546364	SBP-M Ø63	Ø63/Ø62 H64	Ø80/Ø67 H20	0.48
I547064	SBP-M Ø70	Ø70/Ø69 H64	Ø88/Ø74 H20	0.56
I548064	SBP-M Ø80	Ø80/Ø79 H64	Ø98/Ø85 H20	0.70



ARC CONSTRUCTION
SOLUTIONS
IRELAND

Ballykillduff, Tobinstown, Tullow, Co. Carlow.

www.InnoGain.com



Modular System

Description:

Modular magnetic plates and interchangeable plugs for positioning and holding it on its place for plastic or steel tubes/ pipes but also very suitable for all types of flexible tubes or injection hoses. The modular plugs are interchangeable with all modular magnetic plates and provided with an adjustment bolt for better clamping or to adjust when there is a tolerance. The MODU Magnetic plates and the MODU Screw plates are interchangeable with all InnoGain HF-K1 systems for beams and columns. The Modular Plugs are equipped with a KO10 screw thread so that the Modular Magnet Plate and Plug can be removed with a KO10 pull-out key. Suitable adapters for the Modu plates make it possible to position various plastic pipes or flexible tubes easily and reliably.



Specification:

Modular Plug

Article no.	Description	Size (MM)	Weight (KG)
I622823	Modu Plug Ø28	Ø28/Ø27 H23	0.05
I623733	Modu Plug Ø37	Ø37/Ø36 H33	0.09
I624243	Modu Plug Ø42	Ø42/Ø41 H43	0.13
I625153	Modu Plug Ø51	Ø51/Ø50 H53	0.20
I626363	Modu Plug Ø63	Ø63/Ø62 H63	0.33
I627073	Modu Plug Ø70	Ø70/Ø69 H73	0.43
I628073	Modu Plug Ø80	Ø80/Ø79 H73	0.51

Different lengths on request.

Modular Magnet plate

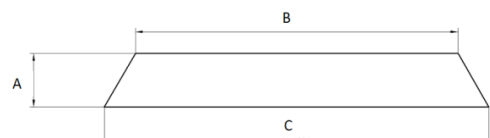
Article no.	Description	Dia. B	Dia. C	Strenght (KG)	Weight (KG)
I510000	Modu M Plate 0 H20	Ø65	Ø75	80	0.25
I511000	Modu M Plate 1 H24	Ø76	Ø90	96	0.31
I512000	Modu M Plate 2 H24	Ø105	Ø128	200	0.67
I513000	Modu M Plate 3 H24	Ø125	Ø150	200	0.80
I514000	Modu M Plate 4 H24	Ø150	Ø177	250	1.28

Modular Screw plate

Article no.	Description	Dia. B	Dia. C	Weight (KG)
I610000	Modu S Plate 0 H20	Ø65	Ø75	0.10
I611000	Modu S Plate 1 H24	Ø76	Ø90	0.19
I612000	Modu S Plate 2 H24	Ø105	Ø128	0.50
I613000	Modu S Plate 3 H24	Ø125	Ø150	0.65
I614000	Modu S Plate 4 H24	Ø150	Ø177	0.93



The Modu Plugs are internally equipped with a KO10 screw thread and on the back an M10 adjustment bolt for better clamping or to adjust when there is a tolerance.



Ballykillduff, Tobinstown, Tullow, Co. Carlow.

www.InnoGain.com



The
WHOLE
Solution



Accessories

Specification:

Modular system

Article no.	Description	Weight (KG)
I622823	Modu Plug Ø28	0.05
I623733	Modu Plug Ø37	0.09
I510000	Modu M Plate 0 H20 Ø65/Ø75	0.25
I611000	Modu S Plate 0 H20 Ø65/Ø75	0.10

Grout plug KO10 adjustable

Article no.	Description	Weight (KG)
I192001	SPB-SPV Ø29 KO10	0.15
I192002	SPB-SPV Ø37 KO10	0.17

Grout Plug Magnet

Article no.	Description	Weight (KG)
I193001	SPB-MP Ø29	0.15
I193002	SPB-MP Ø37	0.17

VB-wingbolt KO10 / US-pull out key KO10

Article no.	Description	Weight (KG)
I190001	VB KO10X200	0.20
I191001	US KO10x150	0.20

Flexible Grout tube

Article no.	Description	Weight KG
I194001	SPB Flexible grout tube Orange Ø29 (25 mtr)	2.50 roll
I194002	SPB Flexible grout tube Orange Ø37 (25 mtr)	3.60 roll

Filling cap

Article no.	Description	Weight (KG)
R624200	Filling cap Ø42	0.18
R625100	Filling cap Ø51	0.18
R626300	Filling cap Ø63	0.20
R627000	Filling cap Ø70	0.23
R628000	Filling cap Ø80	0.25

End cap

Article no.	Description	Weight (KG)
R644200	End cap Ø42	0.02
R645100	End cap Ø51	0.04
R646300	End cap Ø63	0.05
R647000	End cap Ø70	0.10
R648000	End cap Ø80	0.12



Ballykillduff, Tobinstown, Tullow, Co. Carlow.

www.InnoGain.com



The
wHOLE
Solution

POSITIONS INNOGAIN:

