



SWELLING TAPES

JOINT SHEET METALS

**INJECTION HOSES
CONSTRUCTION CHEMISTRY**

**PRESSURE WATER-TIGHT
SERVICE DUCTS**

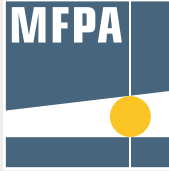
LIGHTNING PROTECTION

FORMWORK ACCESSORIES

PRODUCT RANGE
2022/2023

Product safety

Our products are certified by testing institutes for the various areas of application.



Dr. J. Kemski

Sachverständigenbüro

ö.b.u.v. Sachverständiger für Radon (IHK Bonn/Rhein-Sieg)

IAF - Radioökologie GmbH

Labor für Radionuklidanalytik
Radiologische Gutachten
Consulting



Our pictograms

Testing of impermeability to pressurised water



Testing of fire resistance class according to DIN EN 13501-2 and construction materials class according to DIN EN 13501-1 and DIN 4102-1



Testing of resistance to various media



Standard sound level differential testing according to DIN EN ISO 10140-2



Approved by the building authorities for storage and filling facilities of slurry/liquid manure/silage effluent and biogas facilities



Testing of impermeability to the naturally-occurring radioactive inert gas Radon



Testing of the impact sound reduction based on DIN EN ISO 140-8



Testing of the maximum static load



Testing of the lightning current carrying capacity class according to DIN EN 62561-1



Compliance with the European requirements for construction technology



Compliance with a European harmonised standard



You can find the technical information about the relevant product here.

Technology

STOPPER SCREW

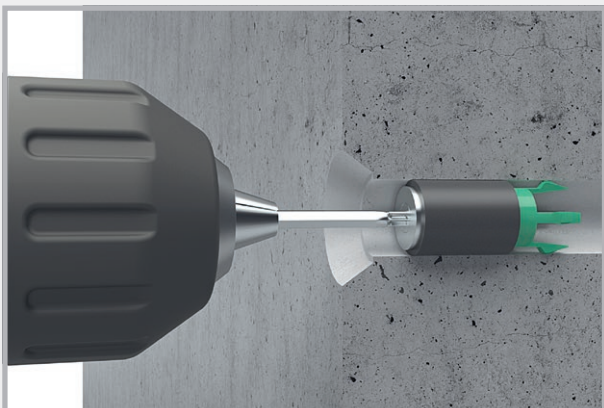


Screwed sealing of formwork tie points – maximum safety with superb appearance

- Pressure water-tight, soundproof and radon-tight
- Fire resistance class EI 240
- For fibre cement and plastic distance tubes
- For conical anchor holes
- Little storage space required
- All-weather installation



Installation



Insert – Tighten – Tight

Appearance

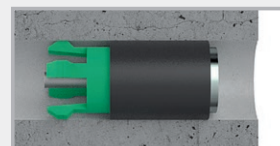


Flush seal for distance tubes with lip (above) or with cone (below).

Distance tube seal with lip (above) or with cone (below).

STOPPER SCREW

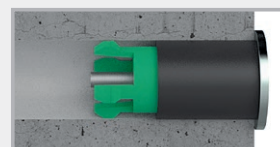
Type in



Art. no.	Description	Tie point inner diameter	PU	Weight
046230	STOPPER SCREW 17 · Type 3 in Overall length: 72 mm	17 to 19.5 mm	100 pcs. incl. 4 bits	2.80 kg per 100 pcs.
046240	STOPPER SCREW 20 · Type 4 in Overall length: 72 mm	19.5 to 22 mm	100 pcs. incl. 4 bits	3.20 kg per 100 pcs.
046210	STOPPER SCREW 22 · Type 1 in Overall length: 72 mm	21.5 to 23 mm	100 pcs. incl. 4 bits	3.70 kg per 100 pcs.
046220	STOPPER SCREW 23 · Type 2 in Overall length: 72 mm	22.3 to 25.4 mm	100 pcs. incl. 4 bits	4.00 kg per 100 pcs.
046250	STOPPER SCREW 25 · Type 5 in Overall length: 72 mm	25 to 28 mm	100 pcs. incl. 4 bits	4.70 kg per 100 pcs.
NEW! 046270	STOPPER SCREW 28 · Type 7 in Overall length: 72 mm	27.5 to 29 mm	100 pcs. incl. 4 bits	4.80 kg per 50 pcs.
NEW! 046260	STOPPER SCREW 31 · Type 6 in Overall length: 80 mm	31 to 34 mm	50 pcs. incl. 2 bits	3.80 kg per 50 pcs.



STOPPER SCREW

Type covered



Art. no.	Description	Tie point inner diameter	PU	Weight
046330	STOPPER SCREW 17 · Type 3 covered Cover plate: 28 mm, overall length: 75 mm	17 to 19.5 mm	100 pcs. incl. 4 bits	3.70 kg per 100 pcs.
046340	STOPPER SCREW 20 · Type 4 covered Cover plate: 28 mm, overall length: 75 mm	19.5 to 22 mm	100 pcs. incl. 4 bits	4.60 kg per 100 pcs.
046310	STOPPER SCREW 22 · Type 1 covered Cover plate: 28 mm, overall length: 75 mm	21.5 to 23 mm	100 pcs. incl. 4 bits	4.70 kg per 100 pcs.
046320	STOPPER SCREW 23 · Type 2 covered Cover plate: 32 mm, overall length: 75 mm	22.3 to 25.4 mm	100 pcs. incl. 4 bits	4.95 kg per 100 pcs.
046350	STOPPER SCREW 25 · Type 5 covered Cover plate: 32 mm, overall length: 75 mm	25 to 28 mm	100 pcs. incl. 4 bits	6.10 kg per 100 pcs.
NEW! 046370	STOPPER SCREW 28 · Type 7 covered Cover plate: 32 mm, overall length: 75 mm	27.5 to 29 mm	100 pcs. incl. 4 bits	6.30 kg per 50 pcs.
NEW! 046360	STOPPER SCREW 31 · Type 6 covered Cover plate: 38.5 mm, overall length: 83 mm	31 to 34 mm	50 pcs. incl. 2 bits	4.80 kg per 50 pcs.

Accessories

Art. no.	Description	PU	Weight	
046170	Cleaning brush for tube 21.5-26 mm	1 pc.	0.11 kg per pc.	
046181	STOPPER SCREW Positioning aid	1 pc.	0.27 kg per pc.	

STOPPER

Inner seals for plastic and fibre cement distance tubes



Art. no.	Description	PU	Weight
046140	STOPPER in 22 for distance tubes inner diameter 21.5-23 mm	Bucket of 250 pcs.	6.00 kg per bucket
046150	STOPPER mini 22 for distance tubes inner diameter 21.5-23 mm	Bucket of 250 pcs.	6.00 kg per bucket
046160	STOPPER maxi 22 for distance tubes inner diameter 21.5-23 mm	Bucket of 250 pcs.	9.00 kg per bucket
046163	STOPPER in 26 for distance tubes inner diameter 26 mm	Bucket of 250 pcs.	10.50 kg per bucket
046170	Cleaning brush for tube 21.5-26 mm	1 pc.	0.11 kg per pc.
046180	Drive-in aid for STOPPER 22 + 26 mm	1 pc.	0.10 kg per pc.




Use a 1500-2000g hard rubber mallet to drive in the STOPPER.


Product description

- STOPPERS are plugs which were developed for pressure-tight sealing of fibre cement and plastic distance tubes.
- Highly resistant plastic specially developed for this application
- Temperature range -35°C to +70°C
If the plugs are installed at ambient temperatures below 0°C, they must be stored above freezing point beforehand for a better installation.
- All-weather installation
- Seals immediately after driving in
- Little storage space required


Tests



Water




Tube type	STOPPER maxi 22 Water column	STOPPER mini 22 Water column	STOPPER in 22 Water column	STOPPER in 26 Water column	Result when sealed on both sides
Plastic distance tube inner diameter approx. 21.5-23 mm	50 m	50 m	30 m	–	No water flow
Fibre cement distance tube inner diameter approx. 22 mm, round	40 m	40 m	20 m	–	No water flow
Steel distance tube inner diameter approx. 22.45 mm, round	40 m	40 m	20 m	–	No water flow
Steel distance tube inner diameter approx. 23 mm, round	30 m	30 m	20 m	–	No water flow
Plastic distance tube inner diameter 26 mm	–	–	–	50 m	No water flow



Fire


- Fire resistance class EI 120 according to DIN EN 13501-2 (STOPPER mini/STOPPER maxi)
Room closure test with fibre cement distance tubes
No cracks or gaps to the test room occur within the test duration of 120 minutes. During this time, no flames were visible on the side facing away from the fire.
- Construction material class DIN EN 13501-1 E = normally flammable
 DIN 4102-1 B2 = normally flammable



Resistance

As well as undergoing a comprehensive slurry/liquid manure/silage effluent test, the plastic is also resistant to several media:

■ Slurry	■ Fermentation mash	■ Ozone
■ Liquid manure	■ Radon + methane gas	■ Bitumen
■ Silage effluent	■ UV radiation	
Depending on the concentration (Please consult our team)	■ Diluted acids + alkalis	■ Oils



Sound insulation

Standard sound level differential test
MFPA testing according to DIN EN ISO 10140-2

A distance tube installed in concrete and sealed at both ends with the STOPPER achieves exactly the same standard sound level as monolithic concrete with the same component thickness.

Installation

STOPPER in



The STOPPER in is pushed into the distance tube.



The STOPPER in is driven in with a 1500-2000 g hard rubber mallet.



Flush seal for distance tubes with lip.



Flush seal for distance tubes with cone.



The STOPPER in can be inserted to any depth.



After inserting the STOPPER in, a cone can be glued in.

STOPPER mini



Position and drive in the STOPPER mini



Sealing of distance tube with lip



Sealing of distance tube with cone

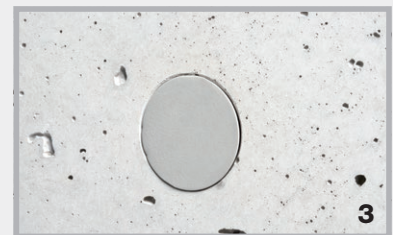
STOPPER maxi



Push the STOPPER maxi into the distance tube



Drive in with rubber mallet



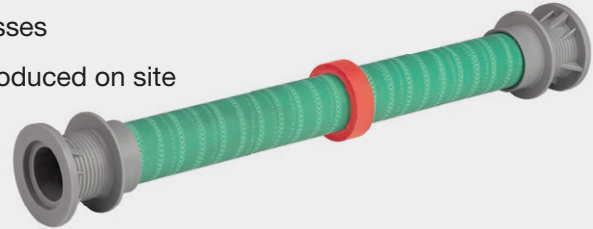
Pressure-tight and flush seal

STOPPER distance tube



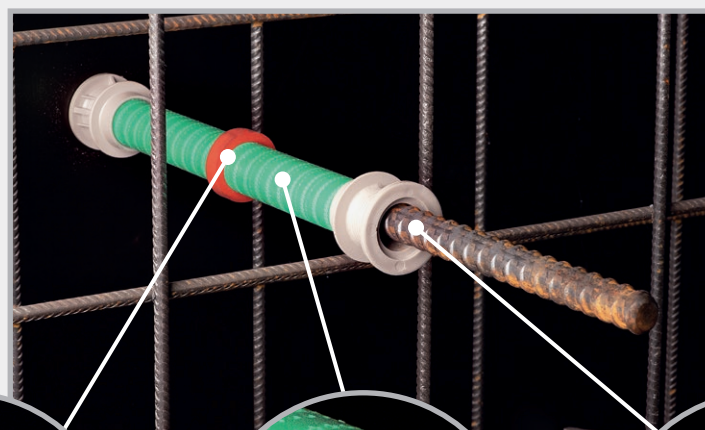
NEW! Pressure water-tight distance tubes with cone on both sides Ø 22 mm

- Pressure water-tight transition to the concrete
- Ready-to-install delivery for all common wall thicknesses
- Special lengths available at short notice or can be produced on site
- Pressure water-tight waterproofing system if sealed inside with:
 - STOPPER in/mini 3 bar
 - STOPPER SCREW 7 bar

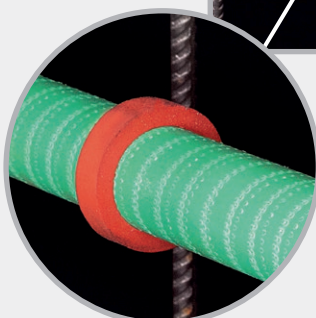


Art. no.	Description	PU	Weight
048200	STOPPER distance tube 22/200 Ø 22 mm, length 200 mm	100 pcs.	7.20 kg per 100 pcs.
048240	STOPPER distance tube 22/240 Ø 22 mm, length 240 mm	100 pcs.	8.10 kg per 100 pcs.
048250	STOPPER distance tube 22/250 Ø 22 mm, length 250 mm	100 pcs.	8.30 kg per 100 pcs.
048300	STOPPER distance tube 22/300 Ø 22 mm, length 300 mm	100 pcs.	9.40 kg per 100 pcs.
048350	STOPPER distance tube 22/350 Ø 22 mm, length 350 mm	100 pcs.	10.50 kg per 100 pcs.
048365	STOPPER distance tube 22/365 Ø 22 mm, length 365 mm	100 pcs.	10.90 kg per 100 pcs.
048400	STOPPER distance tube 22/400 Ø 22 mm, length 400 mm	100 pcs.	11.60 kg per 100 pcs.

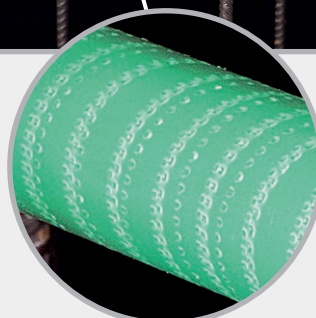
Other lengths are available at short notice.



Ready-to-install delivery for all common wall thicknesses.



Pressure water-tight concrete transition thanks to ActiveRing

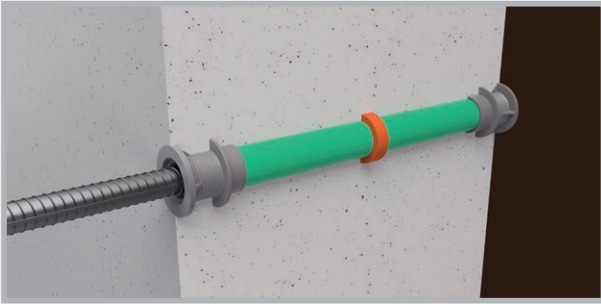


Roughened tube surface for optimum concrete bond

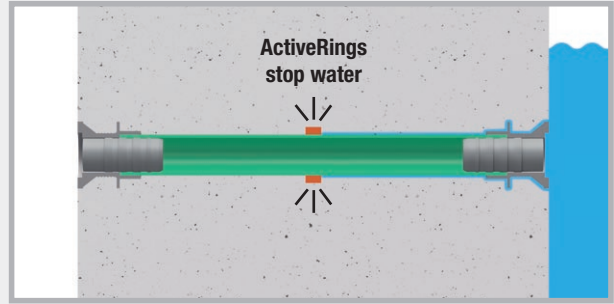


For anchor bars Ø 15/17 mm

Installation



STOPPER distance tube in installed condition before removing the anchor bar.



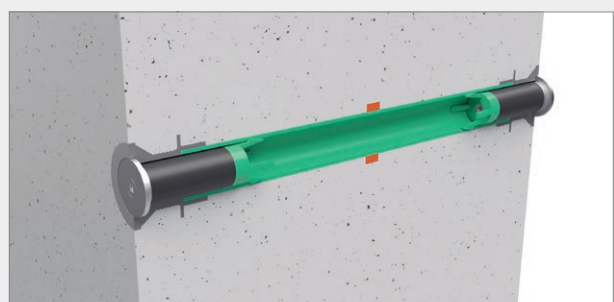
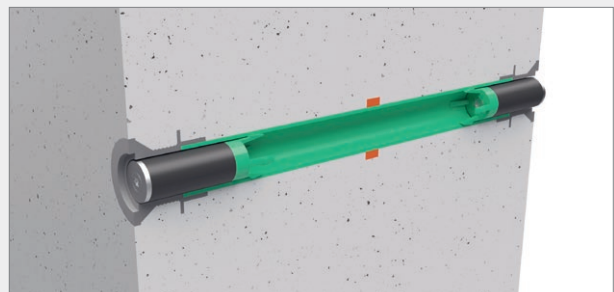
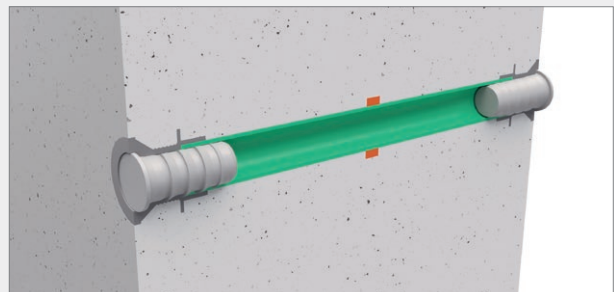
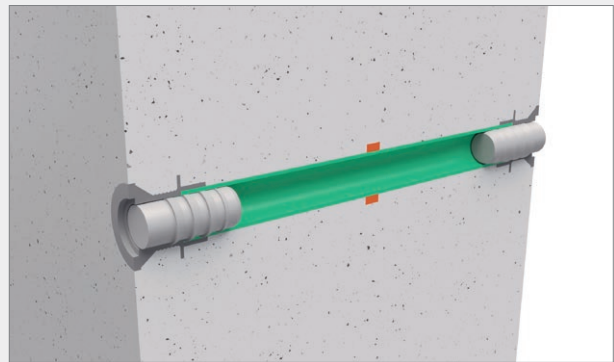
After stripping the formwork, the ActiveRing sits centrally in the concrete part. The ActiveRing seals the transition between the STOPPER distance tube and the concrete securely and permanently.

Water pressure test



Internal closure variant	Water column
STOPPER in	30 m
STOPPER mini	30 m
STOPPER SCREW Type in	70 m
STOPPER SCREW Type covered	70 m

Sealing options for the STOPPER distance tube

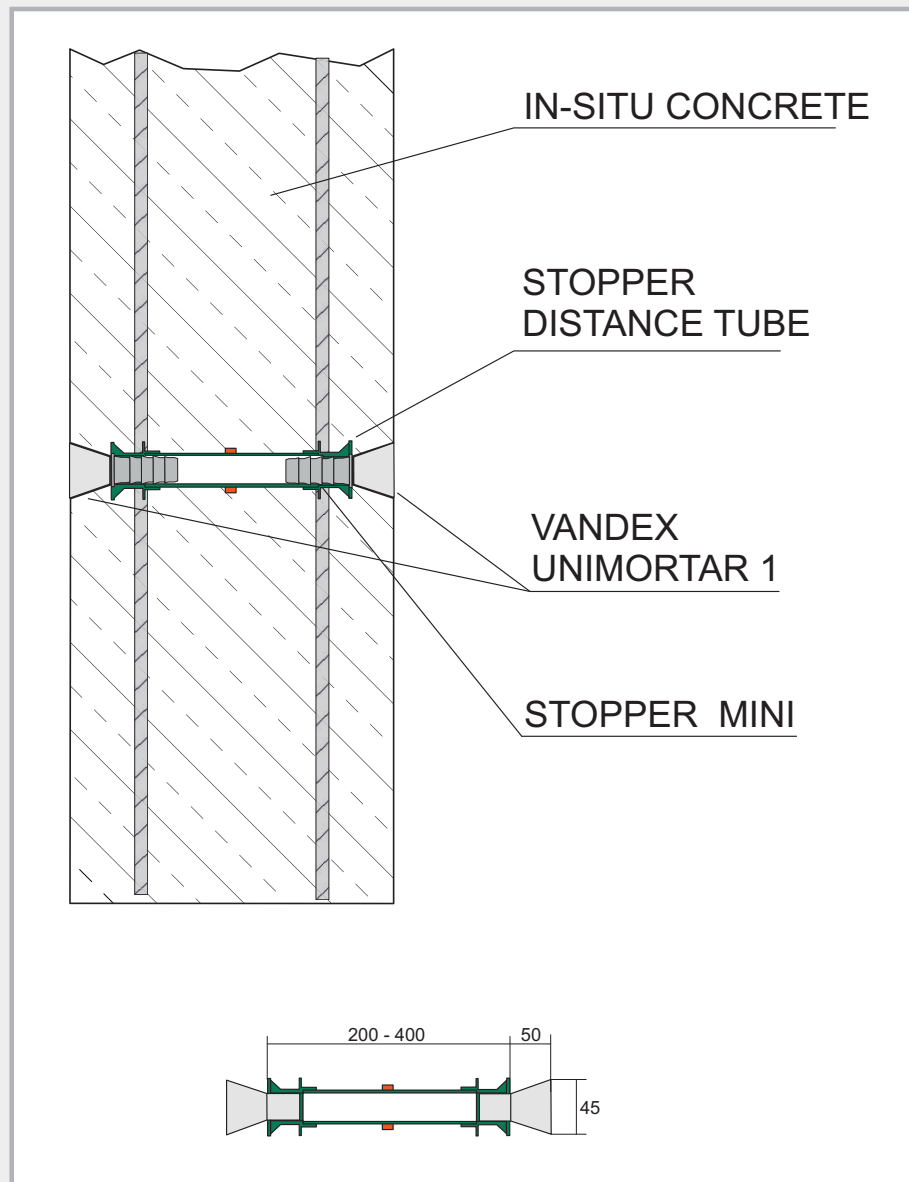
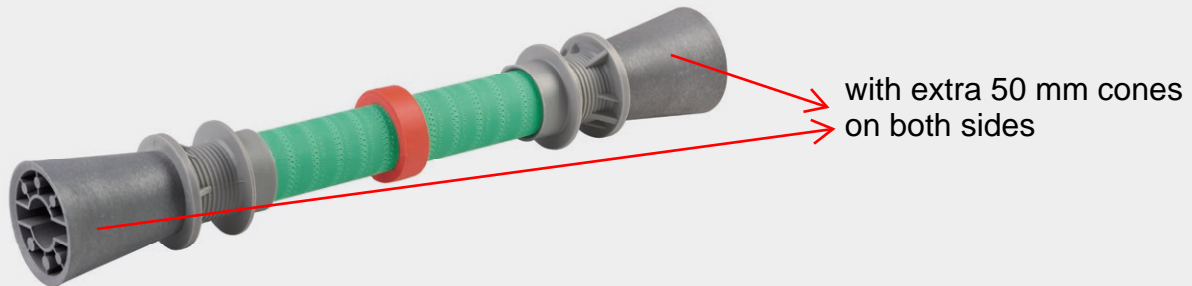


ARC distance tube

In addition to the normal stopper distance tubes, there is also the exclusive ARC version. This is characterised by the fact that additional 50 mm cones are applied on both sides, which can be removed again after concreting.

The Stopper distance tube can then be sealed pressure-tight using a Stopper or Stopper Screw.

You also have the option of closing the recess of the cone, e.g. with Vandex Unimortar 1, to create a flush and clean surface.





BALLYKILLDUFF, TOBINSTOWN, TULLOW, CO. CARLOW
+353 83 096 4453
INFO@ACSI.IE

IRL - 10/2022

