



**CONSTRUCTION
SOLUTIONS**
IRELAND



SWELLING TAPES

JOINT SHEET METALS

**INJECTION HOSES
CONSTRUCTION CHEMISTRY**

**PRESSURE WATER-TIGHT
SERVICE DUCTS**

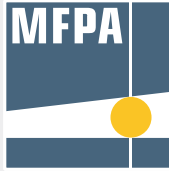
LIGHTNING PROTECTION

FORMWORK ACCESSORIES

PRODUCT RANGE
2022/2023

Product safety

Our products are certified by testing institutes for the various areas of application.



Dr. J. Kemski

Sachverständigenbüro
ö.b.u.v. Sachverständiger für Radon (IHK Bonn/Rhein-Sieg)

IAF - Radioökologie GmbH

Labor für Radionuklidanalytik
Radiologische Gutachten
Consulting



Our pictograms

Testing of impermeability to pressurised water



Testing of fire resistance class according to DIN EN 13501-2 and construction materials class according to DIN EN 13501-1 and DIN 4102-1



Testing of resistance to various media



Standard sound level differential testing according to DIN EN ISO 10140-2



Approved by the building authorities for storage and filling facilities of slurry/liquid manure/silage effluent and biogas facilities



Testing of impermeability to the naturally-occurring radioactive inert gas Radon



Testing of the impact sound reduction based on DIN EN ISO 140-8



Testing of the maximum static load



Testing of the lightning current carrying capacity class according to DIN EN 62561-1



Compliance with the European requirements for construction technology



Compliance with a European harmonised standard



You can find the technical information about the relevant product here.

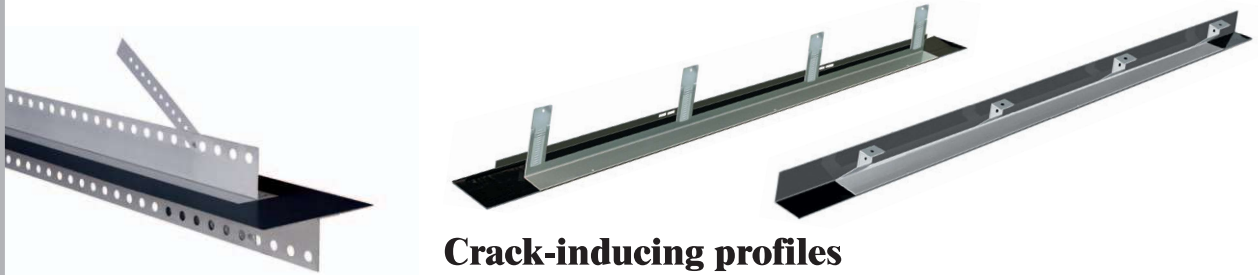
Technology

JOINT SHEET METALS



Coated joint sheet metals

pages 22 – 25



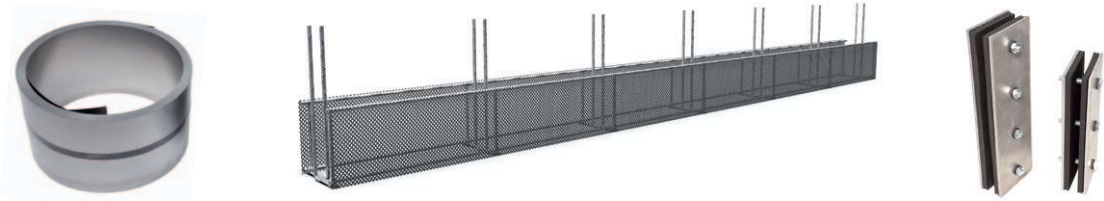
Crack-inducing profiles

page 26



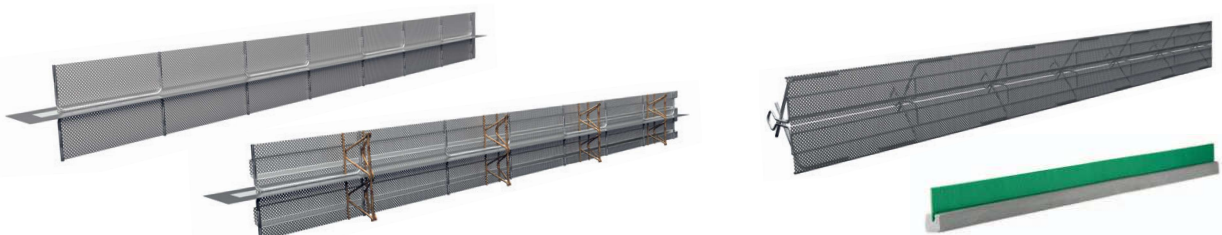
Accessories for coated joint sheet metals

page 27



Uncoated joint sheet metal + joint tape + accessories

pages 28 – 30



Formwork systems & accessories

pages 31 – 51

Coated joint sheet metals

VB joint sheet metal high-pressure metal sheets

Joint sheet metals with reactive, bitumen-free polymer coating for sealing construction joints.

- Very high-pressure water tests
- Resistance tests
- All-weather installation -20°C to +70°C



VB joint sheet metal strips in crates

Art. no.	Description	PU	Secondary packaging	Weight
070450	VB joint sheet metal Length 2.4 m, height 160 mm Crate 120 m (50 strips of 2.4 m each) fully coated on both sides incl. 55 fixing clips and 150 omega brackets Technical details pages 52 – 53	1 crate of 50 pcs. incl. fastening material	12 crates per pallet	130.00 kg per crate
070452	VB joint sheet metal Length 2.0 m, height 160 mm Crate 100 m (50 strips of 2 m each) fully coated on both sides incl. 55 fixing clips and 150 omega brackets Technical details pages 52 – 53	1 crate of 50 pcs. incl. fastening material	12 crates per pallet	110.00 kg per crate
070455	Joint sheet metal 80 Length 2.4 m, height 80 mm Crate 120 m (50 strips of 2.4 m each) fully coated on both sides incl. 55 fixing clips Technical details page 71	1 crate of 50 pcs.	12 crates per pallet	74.00 kg per crate

VB joint sheet metal strips in carton

Art. no.	Description	PU	Secondary packaging	Weight
070470	VB joint sheet metal Length 2.0 m, height 160 mm Carton 30 m (15 strips of 2 m each) fully coated on both sides incl. 20 fixing clips and 40 omega brackets Technical details pages 52 – 53	1 carton of 15 pcs. incl. fastening material	32 cartons per pallet	30.50 kg per carton
070400	Joint sheet metal 80 Length 2.4 m, height 80 mm Carton 60 m (25 strips of 2.4 m each) fully coated on both sides incl. 30 fixing clips Technical details page 71	1 carton of 25 pcs.	32 cartons per pallet	28.00 kg per carton

VB joint sheet metal roll



Technical details pages 52 – 53

The packaging in rolls minimises joints and therefore increases the installation reliability.

NEW!



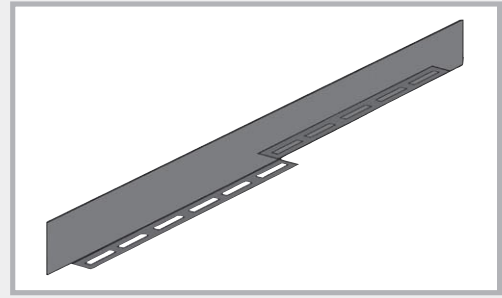
Joint sheet metal roll - F with fixing angle
fully coated on both sides



Joint sheet metal roll VB2 = fully coated on both sides
VB1 = fully coated on one side

Art. no.	Description	PU	Secondary packaging	Weight
NEW! 070468	Joint sheet metal roll - F with fixing angle Joint sheet metal fully coated on both sides Height 160 mm Roll length 20 m incl. 2 fixing clips	1 roll per carton	36 cartons per pallet	21.00 kg per carton
070461	Joint sheet metal roll 160 VB2 Joint sheet metal fully coated on both sides Height 160 mm Roll length 20 m incl. 30 omega brackets and 2 fixing clips	1 roll per carton incl. fastening material	36 cartons per pallet	21.00 kg per carton
070460	Joint sheet metal roll 160 VB1 Joint sheet metal fully coated on one side Height 160 mm Roll length 20 m incl. 30 omega brackets and 2 fixing clips	1 roll per carton incl. fastening material	36 cartons per pallet	19.00 kg per carton
NEW! 070464	Joint sheet metal roll 120 VB2 Joint sheet metal fully coated on both sides Height 120 mm Roll length 20 m incl. 30 omega brackets and 2 fixing clips	1 roll per carton incl. fastening material	48 cartons per pallet	16.90 kg per carton
070463	Joint sheet metal roll 120 VB1 Joint sheet metal fully coated on one side Height 120 mm Roll length 20 m incl. 30 omega brackets and 2 fixing clips	1 roll per carton incl. fastening material	48 cartons per pallet	15.00 kg per carton
070462	Joint sheet metal roll 240 VB2 Joint sheet metal fully coated on both sides Height 240 mm Roll length 20 m incl. 30 omega brackets and 4 fixing clips	1 roll per carton incl. fastening material	24 cartons per pallet	31.00 kg per carton

MASTER joint sheet metal



The joint sheet metal with support rail

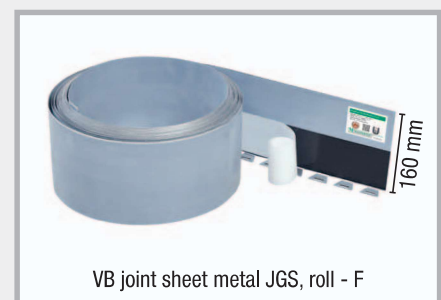
Art. no.	Description	PU	Secondary packaging	Weight
070200	MASTER joint sheet metal Length 2.5 m, height 160 mm Sealing element fully coated on both sides with support rail, 20 mm perforated incl. 45 fixing clips Technical details page 54	1 crate of 40 pcs.	12 crates per pallet	155.00 kg per crate

NEW! VB joint sheet metal JGS (slurry/liquid manure/silage effluent)



The joint sheet metal for storage and filling facilities of slurry/liquid manure/silage effluent and biogas facilities with national technical approval (abZ) [Technical details page 55](#)

Art. no.	Description	PU	Secondary packaging	Weight
070475	VB joint sheet metal JGS, strips Length 2.4 m, height 160 mm Joint sheet metal fully coated on both sides incl. 150 omega brackets and 55 fixing clips	1 crate of 50 pcs. incl. fastening material	12 crates per pallet	130.00 kg per crate
070476	VB joint sheet metal JGS, roll Length 20 m, height 160 mm Joint sheet metal fully coated on both sides incl. 30 omega brackets and 2 fixing clips	1 roll per carton incl. fastening material	36 cartons per pallet	21.00 kg per carton
070477	VB joint sheet metal JGS, roll - F Length 20 m, height 160 mm Joint sheet metal fully coated on both sides with fixing angle incl. 2 fixing clips	1 roll per carton	36 cartons per pallet	21.00 kg per carton



AKTIV joint sheet metal



The active, bentonite-coated joint sheet metal

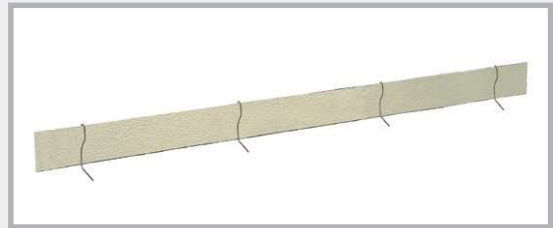


Art. no.	Description	PU	Secondary packaging	Weight
070490	AKTIV joint sheet metal Height 160 mm, roll length 10 m fully coated on one side with bentonite incl. 20 omega brackets, 4 fixing clips and 1.5 m adhesive tape for bonding of joints Technical details page 56	1 roll per carton incl. fastening material	36 cartons per pallet	15.00 kg per carton

MB joint sheet metal



Mineral-coated joint sheet metal for waterproofing of construction joints



Art. no.	Description	PU	Secondary packaging	Weight
070482	Joint sheet metal MB 160, overlap type Length 2.4 m, height 160 mm with full mineral coating on both sides incl. 150 omega brackets and 55 fixing clips Technical details page 57	1 crate of 50 pcs. incl. fastening material	12 crates per pallet	135.00 kg per crate

MASTER-MultiFlex (MMF 140)

active joint tape for waterproofing of construction joints in concrete with
 General Building Supervisory Test Certificate (abP) [Technical details pages 58 – 59](#)

Art. no.	Description	PU	Secondary packaging	Weight	
080643	MMF 140 MASTER-MultiFlex Construction joint tape with additional swelling profile Height 140 mm Roll length 25 m incl. 50 omega brackets	1 carton incl. fastening material	32 cartons per pallet	30.00 kg per carton	
080647	MMF 140 Omega brackets additional omega brackets to secure the MMF 140 in position on the reinforcement	1 sack of 50 pcs.		4.30 kg per sack	
070605	MMF 140 MASTER-Connect "active" Joint tape connector with additional swelling tape	1 pc.		2.00 kg per pc.	

Joint tape, factory standard PVC

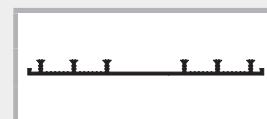
Construction joint tape, internal

Type	Tape width	Roll length	PU	Weight per roll	PVC Factory standard
A 19	190 mm	25 m	1 pc.	24.0 kg	080500
A 24	240 mm	25 m	1 pc.	30.0 kg	080510
A 32	320 mm	25 m	1 pc.	45.0 kg	080520



Construction joint tape, external

AA 19	190 mm	25 m	1 pc.	27.0 kg	080530
AA 24	240 mm	25 m	1 pc.	42.0 kg	080540
AA 32	320 mm	25 m	1 pc.	67.0 kg	080550



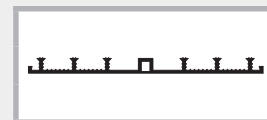
Expansion joint tape, internal

D 19	190 mm	25 m	1 pc.	34.0 kg	080650
D 24	240 mm	25 m	1 pc.	50.0 kg	080660
D 32	320 mm	25 m	1 pc.	62.0 kg	080670



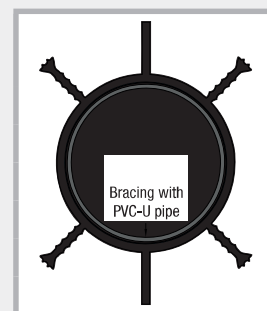
Expansion joint tape, external

DA 19	190 mm	25 m	1 pc.	32.0 kg	080680
DA 24	240 mm	25 m	1 pc.	49.0 kg	080690
DA 32	320 mm	25 m	1 pc.	68.0 kg	080700



Crack inducer tubes

Art. no.	Type	Diameter/mm	Pipe length	PU	Pipe weight
080712	Q 1	88 WS 24 – 35	3.0 m	1 pc.	11.0 kg
080714	Q 1	88	3.5 m	1 pc.	14.0 kg
080724	Q 3	60 WS 17 – 24	3.0 m	1 pc.	8.0 kg
080726	Q 3	60 + cavity walls	3.5 m	1 pc.	10.0 kg



Joint tape clamp

Art. no.	Description	PU	Weight
070510	Joint tape clamp 3 pcs. per metre and side	1 carton of 200 pcs.	1.50 kg per carton

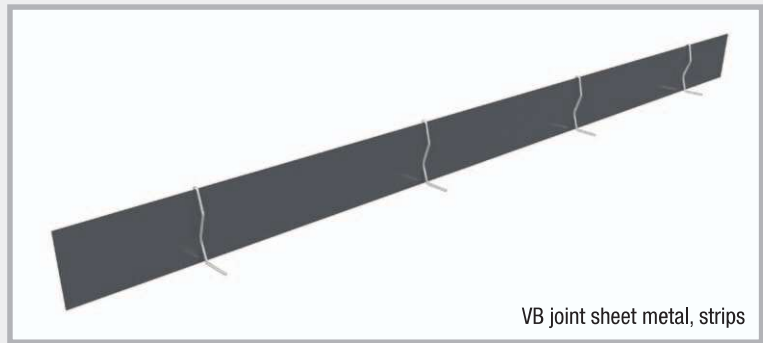


VB joint sheet metal high-pressure metal sheets

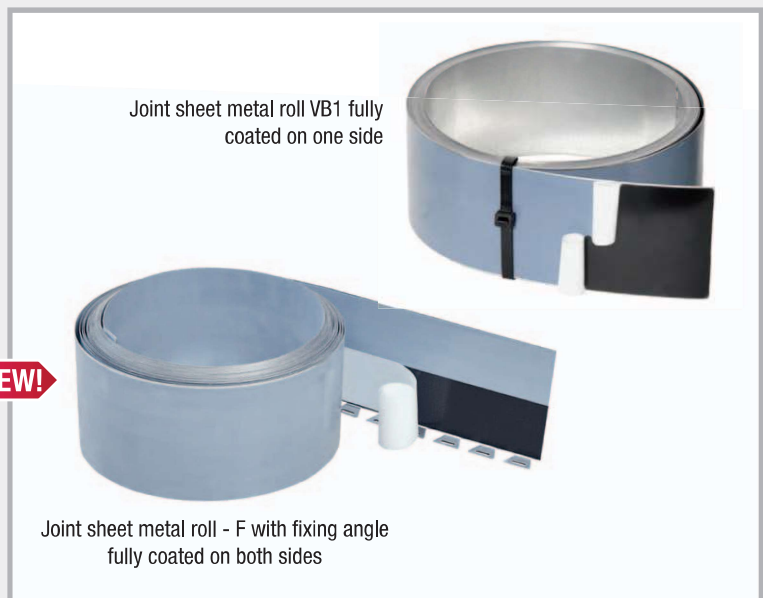


Product description

- VB joint sheet metal consists of a galvanised carrier sheet which is coated with a reactive, bitumen-free polymer coating. The coating forms a watertight bond with the fresh concrete.
- High pressure watertightness with low embedment depth
- Extensive tests (abP, ETA, application tests)
- Extensive accessories for crack-inducing joints and stopend panels



VB joint sheet metal, strips



Description	Height	Length	Water pressure acc. to application test	Water pressure according to abP	Floor slab embedment depth
Strips	80 mm	2.4 m	6 bar (60 m water column)	1 bar (10 m water column)	≥ 30 mm ≤ ½ sheet height
	160 mm	2.0 m / 2.4 m	8 bar (80 m water column)	2 bar (20 m water column)	
Rolls	120 mm	20 m	6 bar (60 m water column)	1.6 bar (16 m water column)	≥ 30 mm ≤ ½ sheet height
	160 mm	20 m	8 bar (80 m water column)	2.0 bar (20 m water column)	
	240 mm	20 m	8 bar (80 m water column)	2.0 bar (20 m water column)	
Rolls with fixing angle	160 mm	20 m	8 bar (80 m water column)	2.0 bar (20 m water column)	≥ 30 mm ≤ ½ sheet height

Technical data and detailed installation instructions can be found at www.Mastertec.eu

Installation instructions

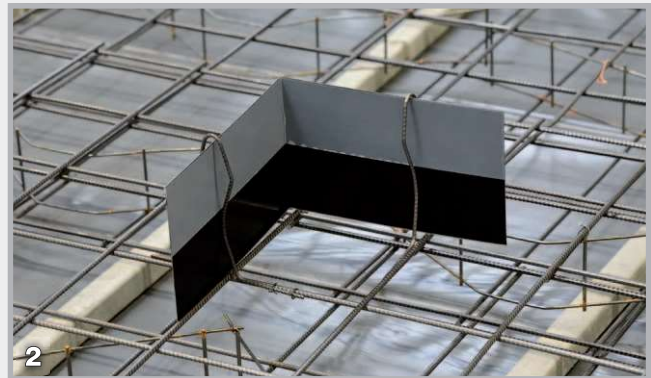
VB joint sheet metal is available as strips or rolls with a special coating on one or both sides.

1. When installing sheet metal with coating on one side, the coating must face the water side.
2. The coating is protected against dirt by a protective film. The protective film must be removed as late as possible, but definitely before concreting.
3. The protective film is separated halfway up the sheet. When concreting the floor slab, the upper half of the protective film remains on the coating and protects it from becoming contaminated during and after concreting. The upper half is removed as late as possible before the wall is concreted (see Fig. 1).
4. Corner formations can be produced on site without any problems (see Fig. 2).
5. In the joint area, the protective film is folded back, the sheet is overlapped over a length of 6 cm, bonded over the entire surface and secured by means of system-specific fixing clips (see Fig. 3).
6. The embedment depth in the first concreting section must not be less than 30 mm and must not exceed half the sheet height.
- 7a. The position on the upper reinforcement layer is secured by means of the system-specific omega brackets (see Fig. 4).
- 7b. In the case of the **joint sheet metal roll - F**, the position is secured by tying the fixing angle to the upper layer of reinforcement using tie wire (see Fig. 5).
8. The joint sheet metal must form a self-contained system that covers all construction and controlled crack joints.

Extensive system accessories available

Crack-inducing profiles page 26

Sto pend panels pages 34 – 51

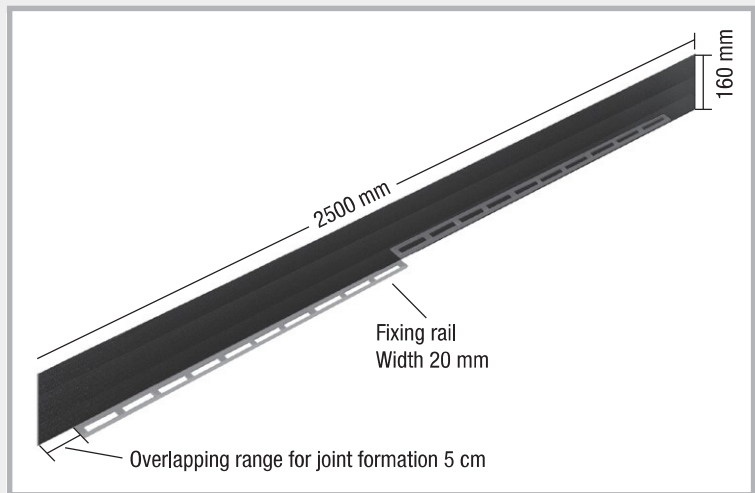


MASTER joint sheet metal



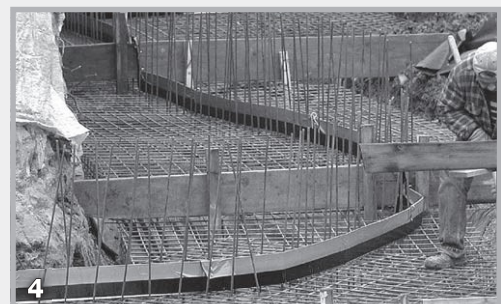
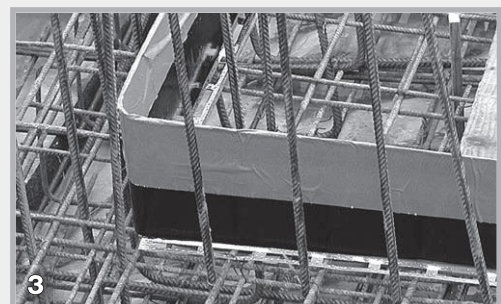
Product description

- MASTER joint sheet metal is made of galvanised sheet steel which is fully coated on both sides with a special coating. The coating forms a water-tight bond with the fresh concrete.
- Element length 2500 mm
- General Building Supervisory Test



Installation instructions

1. The coating is protected against dirt by a protective film. The protective film must be removed as late as possible, but definitely before concreting.
2. The protective film is separated halfway up the sheet. When concreting the floor slab, the upper half of the protective film remains on the coating and protects it from becoming contaminated during and after concreting. The upper half is removed as late as possible before the wall is concreted (see Fig. 1).
3. In the joint area, the protective film is folded back, the sheets are overlapped over a length of 5 cm, bonded over the entire surface and secured by means of system-specific fixing clips (see Fig. 2).
4. The embedment depth in the first concreting section must not be less than 30 mm and must not exceed half the sheet height.
5. Corner formations and other geometries can be produced on site without any problems (see Fig. 3+ 4).
6. The position is secured on the upper layer of reinforcement by anchoring the mounting foot to the upper layer of reinforcement.
7. The joint sheet metal must form a self-contained system that covers all construction and controlled crack joints.



VB joint sheet metal JGS (slurry/liquid manure/silage effluent)



NEW! The Ordinance on Facilities Handling Substances that are Hazardous to Water (AwSV) has defined the requirements for agricultural installations nationwide since 1 August 2017. The aim is to protect water from substances hazardous to water from agricultural structures such as silos, slurry tanks or biogas facilities.



Special requirements are placed on the construction joint sealants here. These must have a verification of fitness for use in the form of a national technical approval (abZ). By extensive resistance and functional tests, the VB joint sheet metal has received this verification of fitness for use for slurry/liquid manure/silage effluent.

Product description

- VB joint sheet metal JGS consists of a galvanised carrier sheet with a highly resistant special coating. The coating forms a water-tight bond with the fresh concrete.
- The coating is resistant to media that affect components in agricultural buildings and biogas facilities.
- National technical approval (abZ) granted by DIBT
- Low embedment depth of 35 mm



Description	Height	Delivery length	Tank height	Floor slab embedment depth
Strips	160 mm	2.4 m	≤ 10 m	≥ 35 mm ≤ ½ sheet height
Rolls	160 mm	20 m	≤ 10 m	≥ 35 mm ≤ ½ sheet height
Rolls with fixing angle	160 mm	20 m	≤ 10 m	≥ 35 mm ≤ ½ sheet height
Stopend panels	All versions of the stopend panels ABS (page 34/35) are also available in JGS (slurry/liquid manure/silage effluent) design.			

Installation instructions

The installation is identical to the VB joint sheet metal (page 53).

However, the embedment depth must be 35 mm into the first concreting section.

Accessories

The verification of fitness for use in the form of the national technical approval (abZ) applies not only to waterproofing products for construction joints but also to pipe penetrations. Here, RONDO Protect offers a waterproofing solution for all common pipe types. You will find an overview on page 99.



Technical data and installation instructions can be found at www.Mastertec.eu

AKTIV joint sheet metal



Bentonite-coated joint sheet metal for waterproofing of construction joints

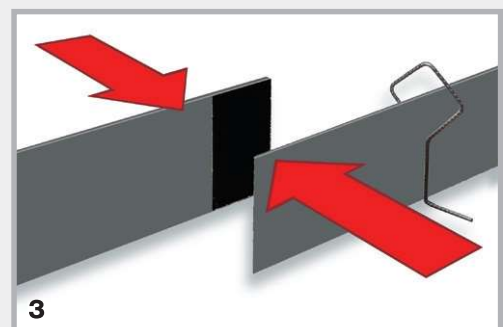
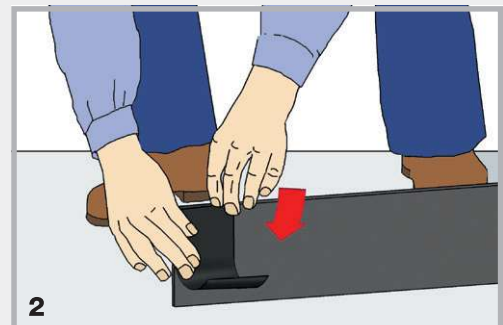
Presentation

Joint sheet metal, fully coated on one side with bentonite. Delivered complete with installation accessories.



Installation instructions

1. The bentonite coating must face the water side.
2. The bentonite coating must be protected from dirt and moisture.
3. The sheet metal can be cut to length on site without any problems (see Fig. 1).
4. Two elements are joined by means of butyl adhesive tape. Strips of this tape are already mounted at the start and end of the roll. When cutting to size, the supplied adhesive tape must be bonded to the bentonite coating at the cutting edge. Press the adhesive surface firmly together and secure with a fixing clip (see Fig. 2 + 3).
5. The embedment depth in the first concreting section must not be less than 35 mm and must not exceed half the sheet height.
6. Corner formations can be produced on site without any problems (see Fig. 4).
7. The position on the upper reinforcement layer is secured by means of the supplied omega brackets.
8. The joint sheet metal must form a self-contained, gap-free system.



Technical data and detailed installation instructions can be found at www.Mastertec.eu

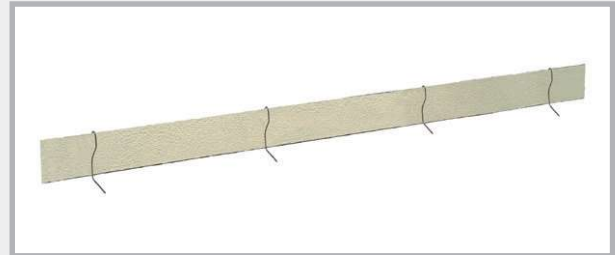
Joint sheet metal MB Overlap



Mineral-coated joint sheet metal for waterproofing of construction joints

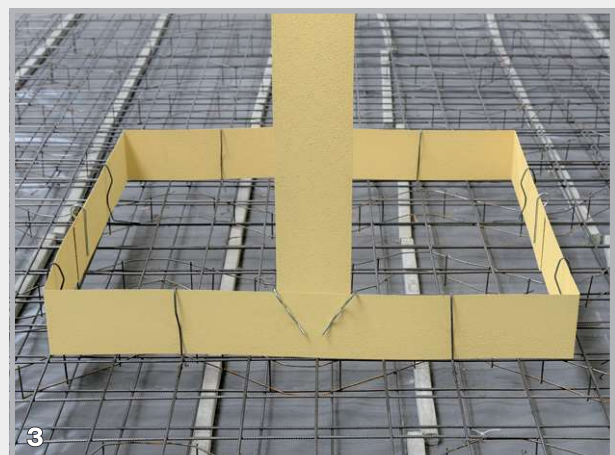
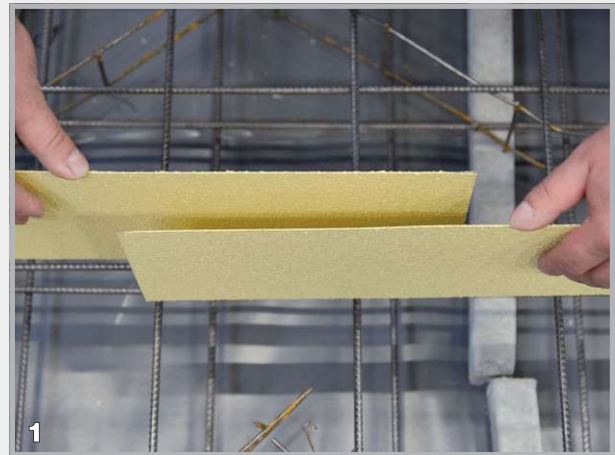
Presentation

Strips with full mineral coating on both sides, 160 mm high. The metal waterproofing profiles are supplied complete with installation accessories.



Installation instructions

1. The mineral coating must be protected from dirt on site.
2. The sheet metal can be cut to length on site without any problems.
3. Two sheets are joined by overlapping. The overlap length must be at least 20 cm and must be additionally secured with a fixing clip (see Fig. 1).
4. The embedment depth in the first concreting section must not be less than 30 mm and must not exceed half the sheet height.
5. Corner formations can be produced on site without any problems (see Fig. 2).
6. The position on the upper reinforcement layer is secured by means of the supplied omega brackets.
7. The joint sheet metal must form a self-contained, gap-free system (see Fig. 3).



Technical data and detailed installation instructions can be found at www.Mastertec.eu

MASTER-MultiFlex (MMF 140)

The active joint tape with General Building Supervisory Test Certificate for waterproofing of construction joints in concrete. MMF 140 is a PVC joint tape with an additional swelling profile on the bottom.



MMF 140 product description

Material: Soft PVC – free from cadmium, chromium and lead
MMF 140 does not contain any substances of very high concern (SVHCs) according to Annex XIV of the REACH Regulation.

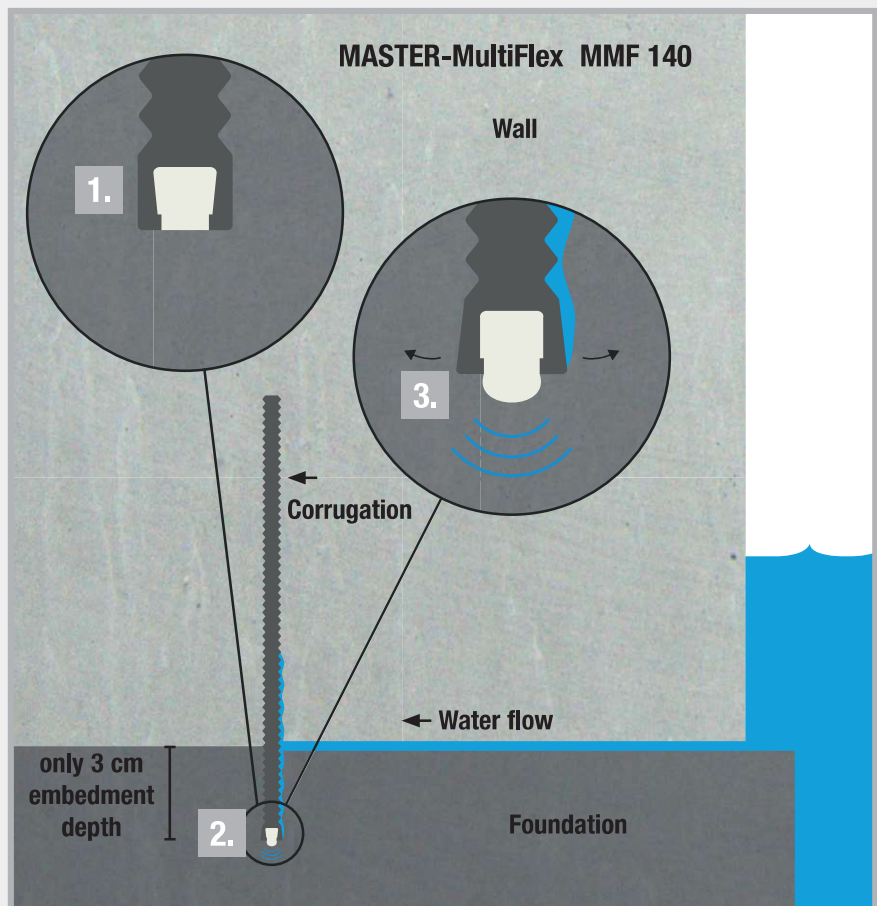
MMF 140 thus complies with European standards.

- Swelling profile:** Active TPE
- Height:** 140 mm
- Thickness:** approx. 6 mm
- Profile:** Corrugated
- Safety:** With marking strips for embedment depth
- Elongation at break:** High
- Tensile strength:** High
- Workability:** -10°C to +60°C
- Joinability:** Welding or MASTER-Connect “active”



Function of MMF 140

- 1.** The figure shows the bottom of the joint tape with the swelling profile still not activated.
- 2.** The pressure resistance of MMF 140 has already been proven from an embedment depth of 3 cm. In the image, you see the joint tape with the activated swelling profile.
- 3.** Here, you see the function of the swelling profile. It expands downwards and compresses the joint. For further security the two flanks are pushed outwards, also stopping the flow of water.



Resistance

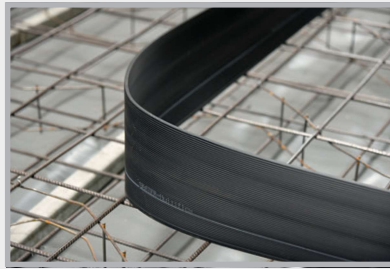
MMF 140 has a good to very good resistance to a number of chemicals and media.

- | | |
|-----------------------------|-----------------------------------|
| ■ Diluted acids and alkalis | ■ Methane gas |
| ■ Salt water | ■ Biogas |
| ■ Alkalinity of concrete | ■ Very good ageing resistance |
| ■ Urea | ■ Very good long-term performance |

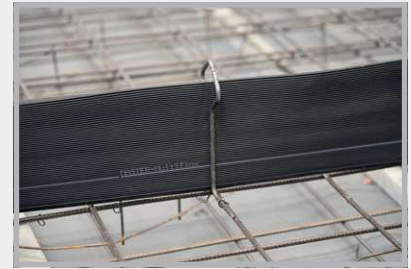
Cutting and installing MMF 140



The non-sagging joint tape can be cut to length easily with a cutter.

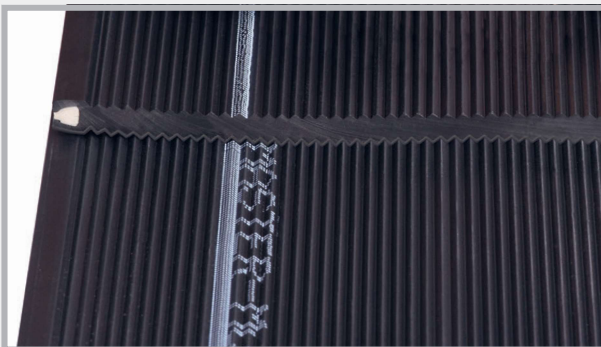


Non-sag but flexible.



Fastened using the MMF 140 omega bracket provided.

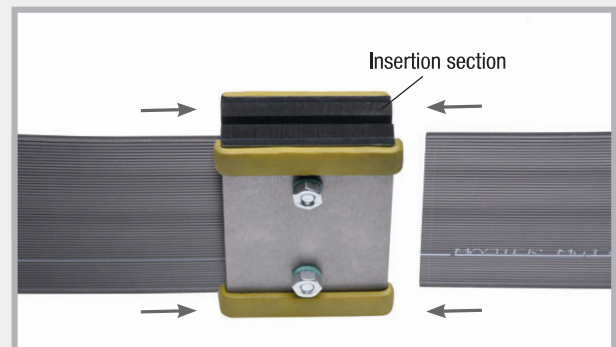
Bonding options



Welding:

Time required at the construction site: approximately 30-40 min.

Welded, overlapped join.



Screwed connection:

Time required at the construction site: approximately 10-15 min.

The MMF 140 joint tape is inserted into the MASTER-Connect on the left and right, and the screws are tightened to approximately 8 Nm.



BALLYKILLDUFF, TOBINSTOWN, TULLOW, CO. CARLOW
+353 83 096 4453
INFO@AGSI.IE

IRL · 03/2022

