



**PRESSURE WATER-TIGHT
SERVICE DUCTS**

PRODUCT RANGE

PRODUCT GROUP 4

2024/2025

Gasket inserts, modular seals + FLEX 2000



MASTER-RING
Gasket insert

page 25



MASTER-RING Supersoft

page 26



MASTER-RING blind plug

page 26



MASTER-RING Multi

pages 27 – 28



MASTER-RING Multi Multiple

page 29



MASTER-RING Multiple

page 30



FLEX 2000

page 31



MASTER-SEAL
Modular seal

pages 32 – 33

MASTER-RING

Stainless steel V2A gasket inserts



Gasket inserts for lining pipes and core drill holes

- One seal against pressurised and non-pressurised water
- Pressure-tight up to 30 m water column, in fixed and secure position up to 50 m
- Rubber thickness 40 mm
- Steel parts and screws made of V2A stainless steel
- Satisfy the requirements of the FHRK testing principles GE 101



Installation: Once the gasket insert has been inserted and the medium pipe has been led through, the screws are tightened crosswise. Give each screw one turn and repeat this procedure several times so the rubber is pressed out uniformly. Maximum torque M6 = 5 Nm, M8 = 10 Nm, M10 = 15 Nm, M12 = 20 Nm. Retighten the nuts after 1–2 hours.

| Ø lining pipe/ core drill hole | Medium pipe in mm | | Weight per pc. | Closed version | Art.Gr. 440 | Split version | Art.Gr. 441 |
|-----------------------------------|----------------------|-----|-------------------|----------------|----------------|---------------|----------------|
| | from | to | | Art. no. | Art. no. | | |
| 50 | 6 | 12 | 0.19 kg | 120080 | | | |
| 80 | 20 | 28 | 0.39 kg | 120100 | | | |
| 80 | 32 | 40 | 0.36 kg | 120105 | | | |
| 80 | 48 | 50 | 0.32 kg | 120095 | | | |
| 100 | 15 | 22 | 0.58 kg | 120107 | | | |
| 100 | 20 | 28 | 0.60 kg | 120110 | | | |
| 100 | 25 | 32 | 0.60 kg | 120112 | | | |
| 100 | 32 | 40 | 0.58 kg | 120115 | | | |
| 100 | 36 | 44 | 0.56 kg | 120120 | | | |
| 100 | 46 | 56 | 0.48 kg | 120125 | | 120125T | |
| 100 | 55 | 65 | 0.51 kg | 120130 | | | |
| 125 | 55 | 64 | 0.74 kg | 120145 | | | |
| 125 | 70 | 78 | 0.67 kg | 120150 | | | |
| 150 | 46 | 54 | 1.53 kg | 120152 | | | |
| 150 | 56 | 66 | 1.31 kg | 120153 | | | |
| 150 | 69 | 78 | 1.24 kg | 120155 | | | |
| 150 | 79 | 91 | 1.17 kg | 120160 | | | |
| 150 | 85 | 94 | 1.07 kg | 120165 | | | |
| 150 | 98 | 110 | 0.96 kg | 120170 | | 120170T | |
| 200 | 88 | 103 | 2.13 kg | 120172 | | | |
| 200 | 108 | 115 | 2.03 kg | 120175 | | 120175T | |
| 200 | 116 | 126 | 1.91 kg | 120180 | | 120180T | |
| 200 | 132 | 141 | 1.51 kg | 120185 | | | |
| 200 | 135 | 144 | 1.48 kg | 120190 | | | |
| 200 | 150 | 160 | 1.41 kg | 120192 | | 120192T | |
| 250 | 135 | 144 | 2.86 kg | 120195 | | | |
| 250 | 140 | 149 | 3.02 kg | 120197 | | | |
| 250 | 150 | 159 | 2.69 kg | 120200 | | | |
| 250 | 157 | 162 | 2.65 kg | 120205 | | 120205T | |
| 250 | 174 | 181 | 2.24 kg | 120210 | | | |
| 250 | 178 | 187 | 2.16 kg | 120215 | | | |
| 250 | 197 | 202 | 1.84 kg | 120216 | | 120216T | |
| 250 | 204 | 210 | 1.77 kg | 120218 | | | |
| 300 | 193 | 204 | 3.49 kg | 120225 | | | |
| 300 | 218 | 226 | 3.17 kg | 120230 | | | |
| 350 | 224 | 233 | 5.44 kg | 120235 | | | |
| 350 | 249 | 258 | 4.98 kg | 120240 | | | |
| 350 | 270 | 282 | 3.64 kg | 120242 | | | |
| 400 | 270 | 280 | 6.14 kg | 120245 | | | |
| 400 | 279 | 288 | 6.06 kg | 120250 | | | |
| 400 | 304 | 313 | 5.47 kg | 120255 | | | |
| 400 | 314 | 323 | 4.57 kg | 120260 | | | |
| 400 | 320 | 330 | 4.44 kg | 120265 | | | |

Additional supply options: Steel parts + screws in V4A stainless steel; rubber made of NBR or compliant with potable water quality standards available on request

MASTER-RING Supersoft

Gasket insert for corrugated and thin-walled medium pipes

- Pressure-tight up to 10 m water column
- Soft rubber compound for corrugated and thin-walled medium pipes
- Rubber thickness 2 x 40 mm
- Steel parts and screws made of V2A stainless steel



Art.Gr.
437

| Core drill hole mm Lining pipe FASO/ WELLO/DURO Plus | Art. no. | Medium pipe in mm | | PU | Weight per pc. |
|--|---------------|----------------------|-----|-------|-------------------|
| | | from | to | | |
| 100 | 120280 | 46 | 56 | 1 pc. | 0.73 kg |
| 100 | 120282 | 55 | 65 | 1 pc. | 0.72 kg |
| 150 | 120284 | 69 | 78 | 1 pc. | 1.88 kg |
| 150 | 120286 | 85 | 94 | 1 pc. | 1.57 kg |
| 150 | 120288 | 98 | 110 | 1 pc. | 1.32 kg |
| 200 | 120290 | 108 | 115 | 1 pc. | 3.04 kg |
| 200 | 120292 | 119 | 128 | 1 pc. | 2.52 kg |
| 200 | 120294 | 150 | 160 | 1 pc. | 1.95 kg |
| 250 | 120296 | 156 | 165 | 1 pc. | 3.70 kg |

Stainless steel V2A blind plugs

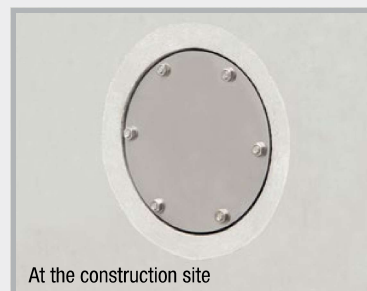
for core drill hole and lining pipe

- Pressure-tight up to 15 m water column
- Rubber thickness 40 mm
- Steel parts and screws made of V2A stainless steel

Art.Gr.
438

| DN | Art. no. | PU | Weight per pc. |
|-----|---------------|-------|----------------|
| 50 | 120518 | 1 pc. | 0.20 kg |
| 80 | 120520 | 1 pc. | 0.49 kg |
| 100 | 120525 | 1 pc. | 0.75 kg |
| 125 | 120530 | 1 pc. | 1.15 kg |
| 150 | 120535 | 1 pc. | 2.17 kg |
| 200 | 120540 | 1 pc. | 3.40 kg |
| 250 | 120545 | 1 pc. | 5.91 kg |
| 300 | 120550 | 1 pc. | 8.47 kg |

Blind plugs up to DN 1500 mm available on request



MASTER-RING Multi

Gasket inserts with “onion ring” technology



A large number of installation options with only 4 sizes

Pressure-resistant: 30 metre water column for closed version
7.5 metre water column for split version

Pressure plate material: V2A stainless steel

Screws and nuts: V2A stainless steel

Rubber material: EPDM

Width of rubber: 40 mm

Resistances: Excellent resistance to ageing, weathering and ozone



| | | | | |
|-----------------------|--|--|--|--|
| Art.Gr. 442 | | | | |
| | MASTER-RING Multi 100 closed Art. no. 120135 | MASTER-RING Multi 150 closed Art. no. 120171 | MASTER-RING Multi 200 closed Art. no. 120193 | MASTER-RING Multi 250 closed Art. no. 120222 |
| Weight/pc. | 0.61 kg | 1.32 kg | 1.73 kg | 2.52 kg |

| | | | | |
|-----------------------|---|---|---|---|
| Art.Gr. 443 | | | | |
| | NEW! MASTER-RING Multi 100 split Art. no. 120135T | NEW! MASTER-RING Multi 150 split Art. no. 120171T | NEW! MASTER-RING Multi 200 split Art. no. 120193T | NEW! MASTER-RING Multi 250 split Art. no. 120222T |
| Weight/pc. | 0.61 kg | 1.32 kg | 1.73 kg | 2.52 kg |

| Without inner plug | Medium pipe in mm from to 18-20 mm | Medium pipe in mm from to 62-64 mm | Medium pipe in mm from to 108-110 mm | Medium pipe in mm from to 158-160 mm |
|--------------------|---|---|---|---|
| 1. ring | 21-25 mm | 74-76 mm | 123-125 mm | 168-170 mm |
| 2. ring | 26-30 mm | 88-90 mm | 138-140 mm | 178-180 mm |
| 3. ring | 31-35 mm | 108-110 mm | 158-160 mm | 198-200 mm |
| 4. ring | 36-40 mm | | | 208-210 mm |
| 5. ring | 41-45 mm | | | |
| 6. ring | 46-50 mm | | | |
| 7. ring | 51-55 mm | | | |
| 8. ring | 56-60 mm | | | |
| 9. ring | 61-65 mm | | | |

Installation of MASTER-RING Multi

Once you have determined the outer diameter of the pipe to be waterproofed, prepare the MASTER-RING Multi for installation.

Example: Multi 100

Example: core drill hole DN 100 and medium pipe with 18 mm outer diameter



Only remove the inner plug.

Example: core drill hole DN 100 and medium pipe with 23 mm outer diameter



After removing the inner plug, release the first ring ...



... and push it through the gasket insert.



Pushed-through 1st ring



Simply cut off the pushed-through ring using a cutter.



Multi 100 ready for installation

Example: Multi 200

Example: core drill hole DN 200 and medium pipe with 110 mm outer diameter



Only remove the inner plug.

Example: core drill hole DN 200 and medium pipe with 125 mm outer diameter



Release the first ring and push it through the gasket.



Cut off the pushed-through ring using a cutter – the gasket is now ready for installation.

Protection of the core drill hole with epoxy resin

- With MC-Injekt 1264 compact, you preserve the core drill hole permanently.
- Application on dry substrate



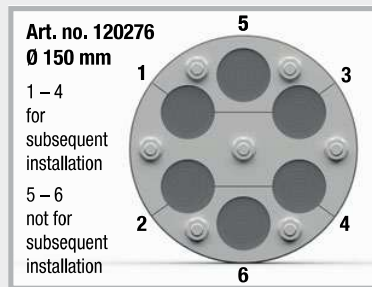
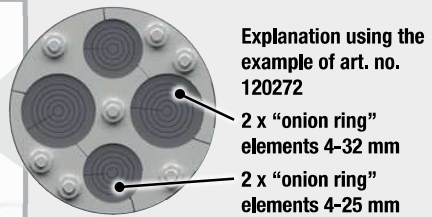
MASTER-RING Multi Multiple

Steel parts: V2A stainless steel
 Version: split
 Rubber material: EPDM
 Width of rubber: 40 mm
 Resistances: Excellent resistance to ageing,
 weathering and ozone



Art.Gr.
444

| Ø lining pipe / core drill hole | Art. no. | Media area | | | | Weight per pc. |
|------------------------------------|---------------|-----------------------------------|-------|-----------------------------------|-------|-------------------|
| | | Quantity "Onion ring" elements | Ø /mm | Quantity "Onion ring" elements | Ø /mm | |
| 100 | 120270 | 3 | 4-32 | | | 0.82 kg |
| 100 | 120272 | 2 | 4-32 | 2 | 4-25 | 0.78 kg |
| 150 | 120274 | 3 | 22-54 | | | 1.70 kg |
| 150 | 120276 | 6 | 4-32 | | | 1.86 kg |
| 150 | 120278 | 2 | 4-32 | 2 | 22-54 | 1.72 kg |



Installation of Multi Multiple

Example for DN 100 core drill hole and medium pipe outer diameter 15 mm with art. no. 120270



Open the split gasket insert and take out the required segmented plug.



Pull out the ring segment you want to remove and sever it with a cutter.



After cutting the stopper to the required size, reinsert it and the gasket insert can be installed.

MASTER-RING Multiple

V2A stainless steel multiple wall duct gasket inserts for cables and pipes

- Pressure-tight up to 10 m water column
- Rubber thickness 40 mm
- Steel parts and screws made of V2A stainless steel

Art.Gr.
439



Split version



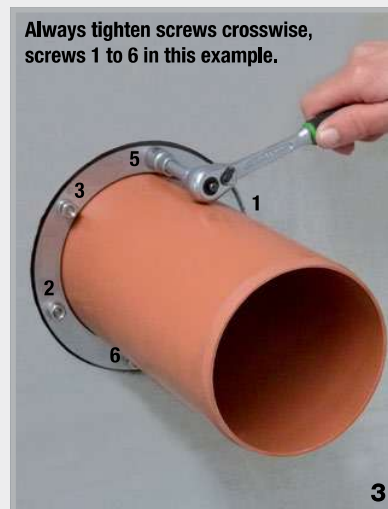
Mounted

| Core drill hole Lining pipe FASO / WELLO / DURO Plus | Art. no. | Outer diameter Medium pipe in mm | Weight per pc. |
|---|---------------|--|-------------------|
| 50 | 120515 | 4 to 20 | 0.39 kg |
| 80 | 120410 | 4 to 33 or 40 or 42 | 0.43 kg |
| 100 | 120415 | 4 to 33 or 40 or 42 or 50 | 0.62 kg |
| 125 | 120420 | 4 to 33 or 40 or 42 or 50 | 0.93 kg |
| 150 | 120425 | 4 to 33 or 40 or 42 or 50 | 1.31 kg |
| | 120495 | Additional borehole | |

As a basic rule, the technical feasibility of the combination of number and diameter of the media in relation to the minimum diameter of the core drill hole or lining pipe must be checked. Please contact our sales office for assistance.

Tightening the MASTER-RING gasket inserts

1. Insert the gasket insert into the lining pipe or the core drill hole.
2. Push the medium pipe through.
3. Tighten the screws crosswise through one turn. Repeat this process until all screws are tightened with the respective torque. Retighten the screws after 1-2 hours.



Always tighten screws crosswise, screws 1 to 6 in this example.

| Nuts | Maximum torque (for dimensionally stable medium pipes) |
|------|---|
| M6 | 5 Nm |
| M8 | 10 Nm |
| M10 | 15 Nm |
| M12 | 20 Nm |

MASTER-SEAL

Modular seal



Art.Gr.
445

- Pre-assembled
- Fast and easy installation
- Tested up to 30 m water column
- Can be retrofitted (all gasket inserts are also separable)

| Area of installation of core drill hole in mm Lining pipe FASO / WELLO / DURO Plus | Medium pipe Outer Ø mm | | Type | Weight | Stainless steel | Galvanised |
|---|------------------------|-----|----------|---------|-----------------|---------------|
| | from | to | | | Art. no. | Art. no. |
| 50 | 11 | 19 | 4 x 275 | 0.08 kg | 110250 | 110600 |
| 50 | 20 | 25 | 4 x 200 | 0.08 kg | 110255 | 110605 |
| 80 | 20 | 33 | 4 x 350 | 0.32 kg | 110260 | 110610 |
| 80 | 34 | 44 | 5 x 300 | 0.30 kg | 110265 | 110615 |
| 80 | 45 | 49 | 6 x 250 | 0.14 kg | 110267 | 110617 |
| 80 | 50 | 55 | 7 x 200 | 0.14 kg | 110268 | 110618 |
| 100 | 27 | 38 | 4 x 375 | 0.50 kg | 110270 | 110620 |
| 100 | 39 | 50 | 6 x 350 | 0.46 kg | 110275 | 110625 |
| 100 | 56 | 64 | 6 x 300 | 0.36 kg | 110280 | 110630 |
| 100 | 65 | 69 | 8 x 250 | 0.19 kg | 110281 | 110631 |
| 100 | 70 | 75 | 9 x 200 | 0.20 kg | 110282 | 110632 |
| 125 | 41 | 44 | 4 x 475 | 1.04 kg | 110283 | 110633 |
| 125 | 45 | 52 | 4 x 415 | 0.96 kg | 110284 | 110634 |
| 125 | 53 | 63 | 5 x 375 | 0.65 kg | 110285 | 110635 |
| 125 | 64 | 78 | 7 x 350 | 0.56 kg | 110290 | 110640 |
| 125 | 79 | 90 | 8 x 300 | 0.48 kg | 110295 | 110645 |
| 125 | 90 | 94 | 11 x 250 | 0.26 kg | 110296 | 110646 |
| 125 | 96 | 100 | 11 x 200 | 0.24 kg | 110297 | 110647 |
| 150 | 58 | 69 | 5 x 475 | 1.30 kg | 110298 | 110648 |
| 150 | 63 | 76 | 5 x 415 | 1.20 kg | 110300 | 110650 |
| 150 | 75 | 82 | 6 x 375 | 0.75 kg | 110305 | 110655 |
| 150 | 88 | 103 | 9 x 350 | 0.68 kg | 110310 | 110660 |
| 150 | 106 | 115 | 10 x 300 | 0.60 kg | 110315 | 110665 |
| 150 | 113 | 118 | 14 x 250 | 0.34 kg | 110316 | 110666 |
| 150 | 120 | 124 | 14 x 200 | 0.31 kg | 110317 | 110667 |
| 200 | 108 | 118 | 7 x 475 | 1.82 kg | 110325 | 110675 |
| 200 | 115 | 122 | 7 x 415 | 1.68 kg | 110330 | 110680 |
| 200 | 125 | 138 | 9 x 375 | 1.12 kg | 110335 | 110685 |
| 200 | 140 | 153 | 13 x 350 | 1.00 kg | 110340 | 110690 |
| 200 | 156 | 165 | 14 x 300 | 0.81 kg | 110345 | 110695 |
| 200 | 164 | 168 | 19 x 250 | 0.46 kg | 110346 | 110696 |
| 200 | 171 | 174 | 19 x 200 | 0.42 kg | 110347 | 110697 |



Place MASTER-SEAL around the medium pipe and seal



Push MASTER-SEAL into the annular gap



Tighten each screw one by one in a circular direction by turning once until all modules are evenly tightened



MASTER-SEAL installation complete

MASTER-SEAL

Modular seal



Art.Gr.
445

| Area of installation of core drill hole in mm Lining pipe FASO / WELLO / DURO Plus | Medium pipe Outer Ø mm | | Type | Weight | Stainless steel | Galvanised |
|---|------------------------|-----|----------|----------|-----------------|------------|
| | from | to | | | Art. no. | Art. no. |
| 250 | 114 | 130 | 6 x 500 | 3.72 kg | 110350 | 110700 |
| 250 | 137 | 158 | 8 x 575 | 3.32 kg | 110355 | 110705 |
| 250 | 159 | 166 | 9 x 475 | 2.34 kg | 110360 | 110710 |
| 250 | 166 | 178 | 7 x 400 | 2.11 kg | 110365 | 110715 |
| 250 | 178 | 185 | 12 x 375 | 1.50 kg | 110370 | 110720 |
| 250 | 182 | 189 | 7 x 425 | 1.75 kg | 110371 | 110721 |
| 250 | 192 | 200 | 17 x 350 | 1.31 kg | 110372 | 110722 |
| 250 | 194 | 202 | 9 x 325 | 1.22 kg | 110373 | 110723 |
| 250 | 208 | 213 | 18 x 300 | 1.04 kg | 110374 | 110724 |
| 300 | 188 | 204 | 10 x 575 | 4.18 kg | 110375 | 110725 |
| 300 | 206 | 217 | 12 x 475 | 3.10 kg | 110380 | 110730 |
| 300 | 215 | 226 | 12 x 415 | 2.88 kg | 110385 | 110735 |
| 300 | 228 | 236 | 15 x 375 | 1.86 kg | 110386 | 110736 |
| 300 | 232 | 242 | 9 x 425 | 2.28 kg | 110387 | 110737 |
| 300 | 244 | 253 | 11 x 325 | 1.49 kg | 110388 | 110738 |
| 300 | 258 | 263 | 22 x 300 | 1.28 kg | 110389 | 110739 |
| 350 | 219 | 231 | 9 x 500 | 5.57 kg | 110390 | 110740 |
| 350 | 239 | 253 | 12 x 575 | 4.99 kg | 110395 | 110745 |
| 350 | 265 | 275 | 14 x 415 | 3.33 kg | 110400 | 110750 |
| 350 | 276 | 286 | 18 x 375 | 2.23 kg | 110405 | 110755 |
| 350 | 314 | 317 | 35 x 250 | 0.84 kg | 110408 | 110758 |
| 400 | 239 | 256 | 10 x 650 | 9.26 kg | 110410 | 110760 |
| 400 | 265 | 274 | 11 x 500 | 6.81 kg | 110415 | 110765 |
| 400 | 314 | 328 | 12 x 400 | 3.62 kg | 110420 | 110770 |
| 400 | 343 | 350 | 15 x 325 | 2.03 kg | 110425 | 110775 |
| 450 | 358 | 370 | 19 x 475 | 4.90 kg | 110430 | 110780 |
| 450 | 366 | 379 | 14 x 400 | 4.23 kg | 110435 | 110785 |
| 450 | 393 | 405 | 17 x 325 | 2.30 kg | 110440 | 110790 |
| 500 | 311 | 326 | 8 x 600 | 14.69 kg | 110443 | 110793 |
| 500 | 340 | 358 | 13 x 650 | 12.04 kg | 110445 | 110795 |
| 500 | 390 | 407 | 18 x 575 | 7.49 kg | 110450 | 110800 |
| 500 | 409 | 419 | 21 x 475 | 5.42 kg | 110455 | 110805 |
| 550 | 390 | 408 | 14 x 650 | 12.96 kg | 110460 | 110810 |
| 550 | 415 | 435 | 15 x 500 | 9.29 kg | 110465 | 110815 |
| 550 | 440 | 457 | 20 x 575 | 8.32 kg | 110470 | 110820 |
| 550 | 457 | 470 | 23 x 475 | 5.93 kg | 110475 | 110825 |
| 600 | 410 | 440 | 10 x 600 | 18.36 kg | 110480 | 110830 |
| 600 | 440 | 458 | 16 x 650 | 14.82 kg | 110485 | 110835 |
| 600 | 490 | 505 | 22 x 575 | 9.15 kg | 110490 | 110840 |
| 600 | 515 | 528 | 19 x 400 | 5.74 kg | 110495 | 110845 |

Additional sizes available immediately ex stock

Installation: After insertion of the modular seal and lead-through of the medium pipe, the screws are tightened one by one in a clockwise direction. Give each screw one turn and repeat this procedure several times so the rubber is pressed out uniformly.

| | | | | | | | |
|-----------------|------|-----------------|-------|---------|-------|-----|--------|
| Maximum torques | TYPE | 200/250/275 | 3 Nm | 500/525 | 60 Nm | 650 | 85 Nm |
| | | 300/325/350/375 | 15 Nm | 575 | 50 Nm | 600 | 130 Nm |
| | | 400/415/425/475 | 35 Nm | | | | |

FORMWORK AIDS

SERVICE DUCT SYSTEM

LINING PIPES

GASKET INSERTS

SEALING COMPOUND

SEALING COLLARS

PIPE BUSHINGS

GROUND DRAINS



BALLYKILLDUFF, TOBINSTOWN, TULLOW, CO. CARLOW

+353 83 096 4453

INFO@ACSI.IE